

www.piocreat3d.com



Product Catalog

Shenzhen PioCreat 3D Technology Co., Ltd.

Add :3rd Floor, Building 1, No. 156 Huawang Road, Langkou Community, Dalang Street, Longhua District, Shenzhen, China, 518109

Tel : +86 0755-2103-9743 | +86 199 2521 7796

Inquiry email : info@piocreat3d.com

Technical support : after@piocreat3d.com

Web : www.piocreat3d.com | www.szc3d.com



YouTube



www.piocreat3d.com

3D Printing Industry Evangelist

ABOUT PIOCREAT

3D Printer Manufacturing

Shenzhen Piocreat 3D Technology Co., Ltd. is a company specializes in the manufacturing of 3D printers and consumables. Since its establishment in 2015, we are committed to independent research and development and innovation, and have completely independent intellectual property rights of product technology. as a R&D and production enterprise providing products and solutions for the whole industry chain, covering 3D printers, 3D design software, 3D printing consumables and 3D printing services, we have built a complete industry chain.



Certificate of High and New Technology Enterprise

Pioneers Make It Happen

1800⁺
Corporate Customers

150⁺
Professional R&D staffs

60⁺
3D Printing Patents





HONORS AND CERTIFICATIONS



R&D AND MANUFACTURING

Piocreat products are categorized into four main systems: dental and jewelry light-curing solutions, consumer-grade light-curing solutions, industrial-grade 3D printing solutions, and channel letter solutions, each designed to meet diverse user needs. These solutions are widely applied across a broad range of industries, including dentistry, healthcare, manufacturing, advertising, education, jewelry, and aviation, among others.



**50000m²
Production Area**



**R&D and
Manufacturing
Center**



**Print Service
Center**

PRODUCT CONTENTS

01

Dental 3D Printing Solution



3D printer+Dental resin+Cleaning machine+UV curing machine

01-14 [▶](#)

02

Jewelry Digital Solutions



Providing the jewelry industry with high-efficiency and high-freedom jewelry molds.

15-19 [▶](#)

03

High-precision Light-curing 3D Printing Solutions



Print every detail for you, capture more subtle and complex details.

20-29 [▶](#)

04

Pellet 3D Printing Solution



Pellet 3D printer + Pellet material + Dryer

30-37 [▶](#)

05

Letter 3D Printing Solution



3D printer + Filament + Curing machine + Acrylic glue

38-42 [▶](#)

06

Accessories



Provide you with complete official accessories support

43-44 [▶](#)

Dental 3D Printing Solution

3D printer+Dental resin+Cleaning machine+UV curing machine

Dental digital technology replaces traditional dental model manufacturing procedures such as taking impressions, turning over impressions, and model scanning, which greatly shortens the time for patients' diagnosis and treatment, improves the comfort of diagnosis and treatment, and achieves the best treatment effect.



• LCD | Light uniformity **90%**

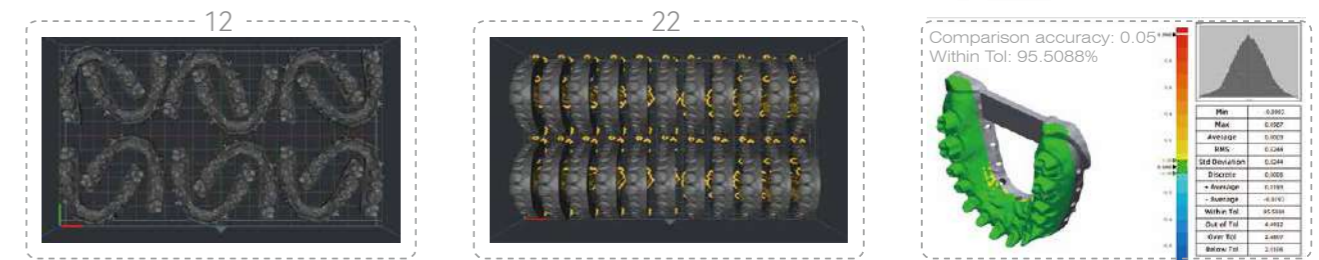
DJ89PLUS

8K 10.3" LCD 3D printer

Learn more



- 8K 29µm Pixel Size** ●
10.3" 8K(7680*4320px) monochrome screen
precise sculpting of model details
- Heating Chamber** ●
chamber heating(20-35°C)
- Automatic Feeding** ●
Avoid lack of resin material
- Stable Z-axis Structure** ●
Dual linear guide rails + ball screw



| SPECIFICATIONS | DJ89PLUS |
|------------------|--------------------------------------|
| Molding tech | LCD |
| Print size | 228×128×100mm |
| Machine size | 450×290×500mm |
| Print speed | Max.60mm/h |
| Layer thickness | 0.01-0.1mm |
| XY axis accuracy | 29µm |
| Printing screen | 10.3 inch, 8K monochrome |
| Rated voltage | 100-120/200-240V~, 50/60Hz |
| Slicer | Piocrat BOX (Win7 or above X64, Mac) |
| Language | 13 languages |
| N.W. | 21.75KG |
| G.W. | 26.28KG |

DJ68

9K 6.8" LCD 3D Printer



9K 18µm Pixel Size

6.8" 9K(8520*4320px) monochrome screen
precise sculpting of model details

Integral Light Source 3.0

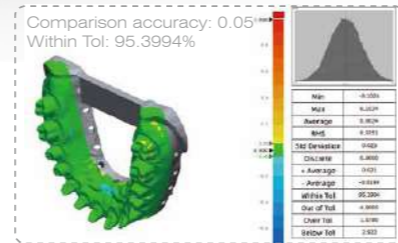
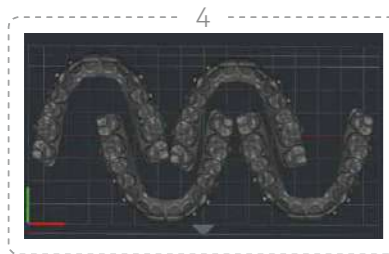
Professional exposure has evolved,
with 90%+ irradiation uniformity

Using a Mask Image

Ensure that the models produced by the entire
printing platform have consistently high quality

Stable Z-axis Structure

Dual linear guide rails + T-shaped screw



| SPECIFICATIONS | DJ68 |
|------------------|--------------------------------------|
| Molding tech | LCD |
| Print size | 153×77×160mm |
| Machine size | 221×221×404mm |
| Print speed | Max.60mm/h |
| Layer thickness | 0.01-0.1mm |
| XY axis accuracy | 18µm |
| Printing screen | 6.8 inch, 9K monochrome |
| Rated voltage | 100-240V~, 50/60Hz |
| Slicer | Piocrat BOX (Win7 or above X64, Mac) |
| Language | 13 languages |
| N.W. | 6.6KG |
| G.W. | 8.1KG |

D150

Adjustable light intensity: 6000-20000µw/cm²



Fast Print

Print speed up to 80mm/h
1920*1080px

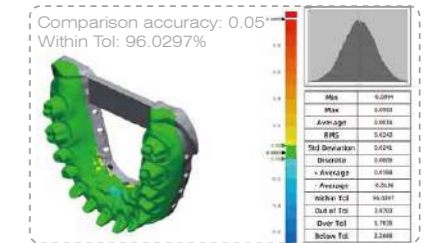
High Speed Release Film

Less release resistance
higher printing success rate

Adjustable Light Intensity

Reduce exposure time

Light Engine Life 30,000+Hours



| SPECIFICATIONS | D150 |
|-----------------|--------------------------------------|
| Molding tech | DLP |
| Print size | 144×81×100mm |
| Machine size | 330×300×675mm |
| Print speed | Max.80mm/h |
| Layer thickness | 0.01-0.1mm |
| Pixel size | 75µm |
| Rated voltage | 100-120/200-240V~, 50/60Hz |
| Slicer | Piocrat BOX (Win7 or above X64, Mac) |
| Language | 13 languages |
| N.W. | 22.1KG |
| G.W. | 26.5KG |

D158

Texas instruments digital micromirror technology

-  **Automatic Lifting Cover** ●
Finger touch lifting
-  **62µm Pixel Size** ●
2560*1440px
-  **High Speed Release Film** ●
Less release resistance
higher printing success rate
-  **Stable Z-axis Structure** ●
Dual linear guide rails + ball screw

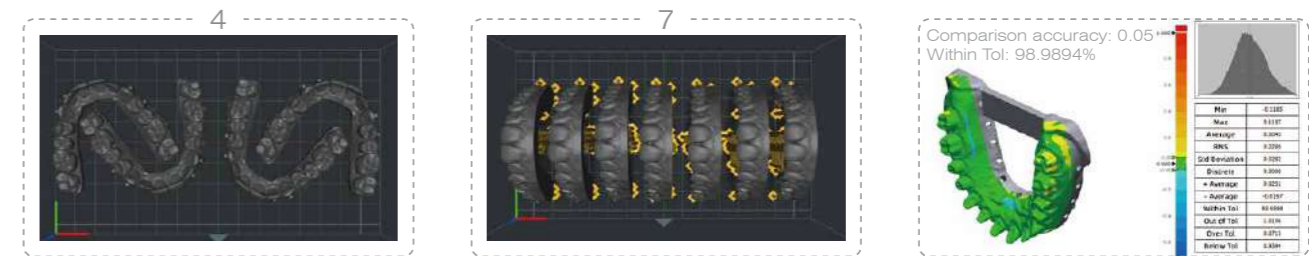


| SPECIFICATIONS | D158 |
|-----------------|--------------------------------------|
| Molding tech | DLP |
| Print size | 158×89×100mm |
| Machine size | 280×280×587mm |
| Print speed | Max.60mm/h |
| Layer thickness | 0.01-0.1mm |
| Pixel size | 62µm |
| Rated voltage | AC100-240V, 50/60Hz |
| Slicer | Piocrat BOX (Win7 or above X64, Mac) |
| Language | 13 languages |
| N.W. | 13KG |
| G.W. | 15KG |

D160

Texas instruments digital micromirror technology

-  **62µm Pixel Size** ●
2560*1440px
-  **High Speed Release Film** ●
Less release resistance
higher printing success rate
-  **Stable Z-axis Structure** ●
Dual linear guide rails + ball screw



| SPECIFICATIONS | D160 |
|-----------------|--------------------------------------|
| Molding tech | DLP |
| Print size | 158×89×100mm |
| Machine size | 280×264×573mm |
| Print speed | Max.60mm/h |
| Layer thickness | 0.01-0.1mm |
| Pixel size | 62µm |
| Rated voltage | AC100-240V, 50/60Hz |
| Slicer | Piocrat BOX (Win7 or above X64, Mac) |
| Language | 13 languages |
| N.W. | 14KG |
| G.W. | 18.65KG |

D190

4K DLP 3D printer for dental

High-precision 4K DLP

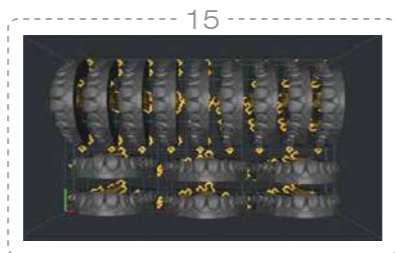
3840*2160px

High Stability

Very high print success rate

Strong Z-axis Lifting Power

57 Stepper motor continuously outputs lifting power



| SPECIFICATIONS | D190 |
|-----------------|--------------------------------------|
| Molding tech | DLP |
| Print size | 192×108×100mm |
| Machine size | 330×300×675mm |
| Print speed | Max.60mm/h |
| Layer thickness | 0.01-0.1mm |
| Pixel size | 50μm |
| Rated voltage | AC100-240V, 50/60 Hz |
| Slicer | Piocrat BOX (Win7 or above X64, Mac) |
| Language | 13 languages |
| N.W. | 21KG |
| G.W. | 25KG |

UV02

High speed curing machine adjustable light intensity

Fast Curing

Curing usually takes 1-5 minutes, reduces distortion due to post-cure exotherm.

Adjustable Light Power

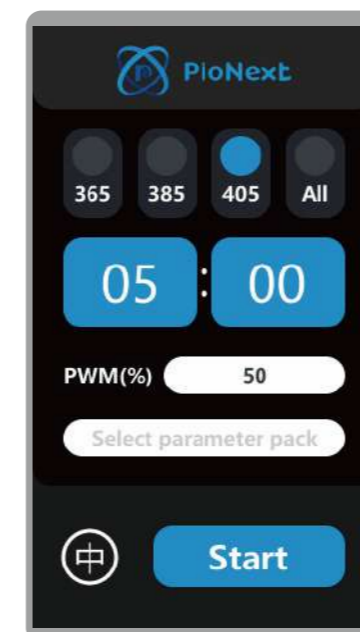
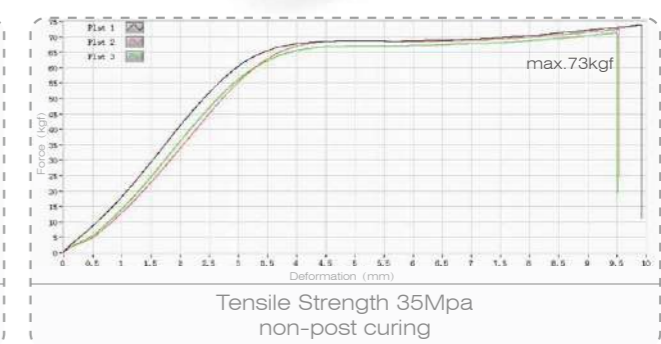
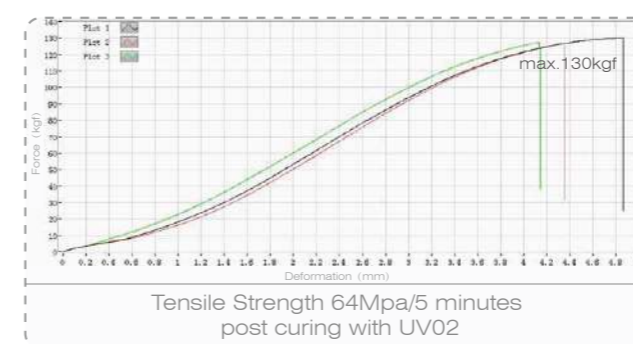
Adjustable light intensity percentage value 5%-100%

Adjustable Wave Length

365nm / 385nm / 405nm customizable

Presets and Customizable Cure Settings

8 groups of data



| SPECIFICATIONS | UV02 |
|----------------------------------|-----------------------------|
| Machine properties | High speed UV curing |
| Machine color | White |
| Curing size | D180×H120mm |
| Machine Size | 366×300×250mm |
| Package Size | 464×386×334mm |
| Rated Power | 360W |
| Input Voltage | 100-120V~/200-240V~,50-60Hz |
| Adjustable light intensity ratio | 5-100% |
| Curing optional time | 00:01 - 30:00(Max.30min) |
| N.W. | 11KG |
| G.W. | 14KG |

UV02 Recommended Curing Parameter

| Resin model | Wavelength | Percentage of Light Intensity | Recommended time | curing with water |
|--------------|------------|-------------------------------|------------------|-------------------|
| PN-model | 385、405nm | 100% | 2 (1,5) min | Yes |
| PN-model 2.0 | 385、405nm | 80% | 2 (1,5) min | Yes |
| PN-RD | 385、405nm | 100% | 3 (2,8) min | Yes |
| PN-TEMP | 385、405nm | 100% | 10 (5,15) min | Yes |
| PN-SG | 385、405nm | 80% | 3 (1,8) min | Yes |
| PN-CAST | 385、405nm | 100% | 3 (1,8) min | Yes |
| PN-WM | 385、405nm | 100% | 3 (1,5) min | Yes |
| PN-GM | 385、405nm | 100% | 10s (5s, 30s) | Yes |
| PN-Try-in | 385、405nm | 100% | 10 (5,15) min | Yes |
| PN-Denture | 385、405nm | 100% | 15 (10,20) min | Yes |

*UV02 is a special equipment for dentistry. Long-time exposure of general consumer resins on the market may cause the risk of model cracking.

CD-X3

Simple operation, one-click cleaning



| SPECIFICATIONS | CD-X3 |
|----------------------|----------------------|
| Machine properties | Ultrasonic Cleaning |
| Tank size | 240×135×100(L*W*H)mm |
| Machine size | 265×160×225(L*W*H)mm |
| Volume | 3L |
| Ultrasonic frequency | 40kHz |
| Ultrasonic power | 120W |
| Heating power | 100W |
| Package size | 310×210×280mm |
| N.W. | 3.2KG |
| G.W. | 3.6KG |



Before cleaning



After cleaning

Ortho model resin

Temperature resistant

● Yellow ● Beige ● Gray , customizable



Learn more



| SPECIFICATIONS | PN-Model | |
|-----------------------------|-----------------|--------------|
| Hardness | ASTM D2240 | D85-90 |
| Flexural modulus | ASTM D790 | 1400-1800MPa |
| Flexural strength | ASTM D790 | 70-90MPa |
| Elongation at break | ASTM D638 | 10-15% |
| Heat deflection temperature | ASTM D648@66PSI | 75-85°C |
| Cytotoxicity | ISO 10993-5 | |
| Allergenicity | ISO 10993-10 | |
| Irritant | ISO 10993-10 | |



| Machine model | Number of layouts (regular size) | 1KG resin printable quantity | Printing time (100μm) | Printing time (50μm) |
|---------------|----------------------------------|------------------------------|-----------------------|----------------------|
| DJ89PLUS | 8-10 | ≥ 80 | 23min | 44min |
| D158/D160 | 4-5 | ≥ 80 | 17min | 28min |
| D150 | 2-3 | ≥ 80 | 15min | 28min |
| D136 | 15-17 | ≥ 80 | 41min | 72min |

Ortho model resin 2.0

Cost-effective

● Yellowish brown ● Gray , customizable

Learn more



| SPECIFICATIONS | PN-Model 2.0 | |
|-----------------------------|-----------------|--------------|
| Hardness | ASTM D2240 | D85-90 |
| Flexural modulus | ASTM D790 | 1200-1600MPa |
| Flexural strength | ASTM D790 | 80-95MPa |
| Tensile modulus | ASTM D638 | 600-1000MPa |
| Tensile strength | ASTM D638 | 40-50MPa |
| Heat deflection temperature | ASTM D648@66PSI | 75-85 C |



| Machine model | Number of layouts (regular size) | 1KG resin printable quantity | Printing time (100μm) | Printing time (50μm) |
|---------------|----------------------------------|------------------------------|-----------------------|----------------------|
| DJ89PLUS | 8-10 | ≥ 80 | 23min | 44min |
| D158/D160 | 4-5 | ≥ 80 | 17min | 28min |
| D150 | 2-3 | ≥ 80 | 15min | 28min |
| D136 | 15-17 | ≥ 80 | 41min | 72min |

Surgical guide resin

High transparency

○ Transparent



Learn more



| SPECIFICATIONS | | PN-SG | |
|---------------------|--------------|------------|--|
| Hardness | ASTM D2240 | D75-85 | |
| Tension strength | ASTM D638 | 40-60MPa | |
| Elongation at Break | ASTM D638 | 10-15% | |
| Flexural Strength | ASTM D790 | 100-120MPa | |
| Cytotoxicity | ISO 10993-5 | | |
| Allergenicity | ISO 10993-10 | | |
| Irritant | ISO 10993-10 | | |

| Machine model | Number of layouts (regular size) | 1KG resin printable quantity | Printing time (100μm) | Printing time (50μm) |
|---------------|----------------------------------|------------------------------|-----------------------|----------------------|
| DJ89PLUS | 10-11 | ≥ 180 | 44min | 79min |
| D158/D160 | 3-4 | ≥ 150 | 39min | 74min |
| D150 | 3-4 | ≥ 150 | 35min | 68min |
| D136 | 15-16 | ≥ 195 | 50min | 90min |

Dental casting resin

Residue free

● Cherry red ● Green



Learn more



| SPECIFICATIONS | | PN-Cast | |
|---------------------|------------|--------------|--|
| Hardness | ASTM D2240 | D80-85 | |
| Flexural modulus | ASTM D790 | 1500-2000MPa | |
| Flexural strength | ASTM D790 | 45-65MPa | |
| Bakeout temperature | / | 1.5h@850°C | |

| Machine model | Number of layouts (regular size) | 1KG resin printable quantity | Printing time (100μm) | Printing time (50μm) |
|---------------|----------------------------------|------------------------------|-----------------------|----------------------|
| DJ89PLUS | 28-29 | ≥ 600 | 34min | 60min |
| D158/D160 | 11-12 | ≥ 550 | 27min | 52min |
| D150 | 10-11 | ≥ 550 | 27min | 52min |
| D136 | 45-48 | ≥ 600 | 37min | 66min |

Removable die model resin

Scratch resistance

● Wheat complexion ● Gray , customizable



Learn more



| SPECIFICATIONS | | PN-RD | |
|---------------------|--------------|--------------|--|
| Hardness | ASTM D2240 | D85-90 | |
| Flexural modulus | ASTM D790 | 1500-2000MPa | |
| Flexural strength | ASTM D790 | 60-80MPa | |
| Elongation at break | ASTM D638 | 10-15% | |
| Cytotoxicity | ISO 10993-5 | | |
| Allergenicity | ISO 10993-10 | | |
| Irritant | ISO 10993-10 | | |

| Machine model | Number of layouts (regular size) | 1KG resin printable quantity | Printing time (100μm) | Printing time (50μm) |
|---------------|----------------------------------|------------------------------|-----------------------|----------------------|
| DJ89PLUS | 10-11 | ≥ 140 | 43min | 77min |
| D158/D160 | 4-5 | ≥ 120 | 43min | 70min |
| D150 | 4 | ≥ 150 | 29min | 56min |
| D136 | 18-19 | ≥ 80 | 47min | 87min |

Temporary restoration resin

A1/A2/A3/B1/BL1

● A1 ● A2 ● A3 ● B1 ● BL1 , customizable



Learn more



| SPECIFICATIONS | | PN-Temp | |
|------------------------|--------------|--------------|--|
| Hardness | ASTM D2240 | D85-90 | |
| Flexural modulus | ASTM D790 | 2000-3000MPa | |
| Flexural strength | ASTM D790 | 100-140MPa | |
| Tensile modulus | ASTM D638 | 1100-1500MPa | |
| Tensile strength | ASTM D638 | 65-85MPa | |
| Elongation at break | ASTM D638 | 10-15% | |
| Water absorption | ASTM D570 | <1.0% | |
| Cytotoxicity | ISO 10993-5 | | |
| Allergenicity/Irritant | ISO 10993-10 | | |

| Machine model | Number of layouts (regular size) | 1KG resin printable quantity | Printing time (100μm) | Printing time (50μm) |
|---------------|----------------------------------|------------------------------|-----------------------|----------------------|
| DJ89PLUS | 11-12 | ≥ 300 | 45min | 81min |
| D158/D160 | 6-7 | ≥ 265 | 31min | 60min |
| D150 | 3-4 | ≥ 280 | 38min | 74min |

Try-in resin

Wear and use for a short period (1 month)

A2 , customizable



Learn more



| SPECIFICATIONS | | PN-Try-in | |
|------------------------|--------------|--------------|--|
| Hardness | ASTM D2240 | D85-90 | |
| Flexural modulus | ASTM D790 | 1800-2500MPa | |
| Flexural strength | ASTM D790 | 80-100MPa | |
| Tensile modulus | ASTM D638 | 600-900MPa | |
| Tensile strength | ASTM D638 | 55-65MPa | |
| Elongation at break | ASTM D638 | 12-16% | |
| Water absorption | ASTM D570 | <1.0% | |
| Cytotoxicity | ISO 10993-5 | | |
| Allergenicity/Irritant | ISO 10993-10 | | |

| Machine model | Number of layouts (regular size) | 1KG resin printable quantity | Printing time (100μm) | Printing time (50μm) |
|---------------|----------------------------------|------------------------------|-----------------------|----------------------|
| DJ89PLUS | 5-6 | ≥ 60 | 55min | 75min |
| D158/D160 | 2-3 | ≥ 45 | 40min | 70min |
| D150 | 2-3 | ≥ 45 | 40min | 67min |

Denture base resin

Can be worn for a long time (1 to 3 years)

Red



Learn more



| SPECIFICATIONS | | PN-Denture | |
|--|--------------|--------------|--|
| Hardness | ASTM D2240 | D85-90 | |
| Flexural modulus | ASTM D790 | 3000-4000Mpa | |
| Flexural strength | ASTM D790 | 130-150Mpa | |
| Tensile modulus | ASTM D638 | 1500-2000MPa | |
| Tensile strength | ASTM D638 | 80-100MPa | |
| Elongation at break | ASTM D638 | 25-30% | |
| Water absorption | ASTM D570 | <1.0% | |
| In vitro cytotoxicity | ISO 10993-5 | | |
| Irritation | ISO 10993-23 | | |
| Skin sensitization | ISO 10993-10 | | |
| Pyrogen / systemic toxicity | ISO 10993-11 | | |
| Genotoxicity, carcinogenic and reproductive toxicity | ISO 10993-3 | | |

| Machine model | Number of layouts (regular size) | 1KG resin printable quantity | Printing time (100μm) | Printing time (50μm) |
|---------------|----------------------------------|------------------------------|-----------------------|----------------------|
| DJ89PLUS | 5-6 | ≥ 60 | 55min | 75min |

Water-washable dental resin

Water-washable

Dark wheat skin , customizable



Learn more



| SPECIFICATIONS | | PN-WM | |
|-----------------------------|-----------------|--------------|--|
| Hardness | ASTM D2240 | D85-90 | |
| Flexural modulus | ASTM D790 | 1000-1500MPa | |
| Flexural strength | ASTM D790 | 60-75MPa | |
| Tensile modulus | ASTM D638 | 600-1000MPa | |
| Tensile strength | ASTM D638 | 40-55MPa | |
| Elongation at break | ASTM D638 | 10-15% | |
| Heat deflection temperature | ASTM D648@66PSI | 75-80 °C | |

| Machine model | Number of layouts (regular size) | 1KG resin printable quantity | Printing time (100μm) | Printing time (50μm) |
|---------------|----------------------------------|------------------------------|-----------------------|----------------------|
| DJ89PLUS | 5-6 | ≥ 80 | 29min | 44min |
| D158/D160 | 2-3 | ≥ 80 | 32min | 61min |
| D150 | 2-3 | ≥ 80 | 30min | 55min |
| D136 | 11-12 | ≥ 100 | 35min | 62min |

Gingiva resin

Excellent elasticity

Gingival red



Learn more



| SPECIFICATIONS | | PN-GM | |
|---------------------|------------|-----------|--|
| Hardness | ASTM D2240 | A30-50 | |
| Tensile strength | ASTM D 412 | 8-15MPa | |
| Elongation at break | ASTM D 412 | 300-400% | |
| Tear strength | ASTM D 624 | 12-18kN/m | |

| Machine model | Number of layouts (regular size) | 1KG resin printable quantity | Printing time (100μm) | Printing time (50μm) |
|---------------|----------------------------------|------------------------------|-----------------------|----------------------|
| DJ89PLUS | 29-30 | ≥ 1000 | 34min | 59min |
| D158/D160 | 10-12 | ≥ 1100 | 30min | 57min |
| D150 | 7-8 | ≥ 700 | 30min | 57min |
| D136 | 40-42 | ≥ 1100 | 40min | 71min |

Jewelry Digital Solutions

3D printed resin models replace wax models, providing the jewelry industry with high-efficiency and high-freedom jewelry molds.



• LCD | Light uniformity **90%**

D136

7K 13.6" LCD 3D Printer

- 7K
46μm Pixel Size
 - 13.6" 7K(6480*3600px) monochrome screen precise sculpting of model details
- High Speed Release Film
 - Less release resistance higher printing success rate
- Large Printing Size
 - 298×165×300mm
- Stable Z-axis Structure
 - Dual linear guide rails + ball screw

Learn more



| SPECIFICATIONS | D136 |
|-------------------|---|
| Molding tech | LCD |
| Print size | 298×165×300mm |
| Machine size | 480×376×770mm |
| Print speed | Max.70mm/h |
| Layer thickness | 0.01-0.1mm |
| resolution | 6480*3600px |
| XY axis accuracy | 46μm |
| Printing screen | 13.6 inch,7K monochrome |
| Printing platform | Sand blasting oxidation platform with holes |
| Lifting speed | 60-180mm/min |
| Print speed | 1~4s/layer |
| Rated voltage | AC100-240V 50/60Hz |
| Slicer | Piocreac BOX (Win7 or above X64, Mac) |
| Language | 13 languages |
| N.W. | 33.8KG |
| G.W. | 51.2KG |

C01

14K Ultra-high precision 3D printer

- 14K 10.1" 14K Monochrome Screen**
14K ultra-high precision
- 16.8µm*24.8µm**
13320*5120px
- Print Platform**
Sand blasting oxidation platform
- Stable Z-axis Structure**
Dual linear guide rails + ball screw



| SPECIFICATIONS | C01 |
|-----------------|---|
| Molding tech | LCD |
| Print size | 223×126×200mm |
| Machine size | 340×292×552mm |
| Package size | 480×425×720mm |
| Print speed | Max.70mm/h |
| Layer thickness | 0.01-0.1mm |
| Resolution | 13320*5120 |
| Pixel size | 16.8µm*24.8µm |
| Trough capacity | 1000ml |
| Z-axis type | Dual linear guide rails + ball screw |
| Print platform | Sand blasting oxidation platform with holes |
| Rated voltage | 100-120/200-240V~, 50/60Hz |
| Slicer | Piocreat BOX (Win7 or above X64, Mac) |
| Language | 13 languages |
| N.W. | 15.77KG |
| G.W. | 20.55KG |

Castable Wax Resin

Application Field: Jewelry, wax content 15%

Blue



Learn more



| TEST ITEMS | PN-JC15 | |
|-------------|-------------|-----------------------|
| Viscosity | ASTM D 2196 | 50-100 cps(@25°C) |
| Density | ASTM D 792 | 1.05-1.15g/cm³(@25°C) |
| Ash content | | <0.1% |



| Machine model | Number of layouts (regular size) | 1KG resin printable quantity | Printing time (100µm) | Printing time (50µm) |
|---------------|----------------------------------|------------------------------|-----------------------|----------------------|
| D136 | 45-50 | ≥ 1627 | 129min | 253min |
| C01 | 24-28 | ≥ 1627 | 88min | 172min |

Castable White Wax Resin

Application field: Jewelry, wax content 20%

Dark Green



Learn more



| TEST ITEMS | PN-JC20 | |
|-------------|-------------|-----------------------|
| Viscosity | ASTM D 2196 | 50-150 cps (@25°C) |
| Density | ASTM D 792 | 1.05-1.15g/cm³(@25°C) |
| Ash content | | <0.1% |



| Machine model | Number of layouts (regular size) | 1KG resin printable quantity | Printing time (100µm) | Printing time (50µm) |
|---------------|----------------------------------|------------------------------|-----------------------|----------------------|
| D136 | 45-50 | ≥ 1627 | 134min | 262min |
| C01 | 24-28 | ≥ 1627 | 96min | 182min |

Castable High Wax Resin

Application field: Jewelry, wax content 30%

● Black ● Green ● Yellow ● Orange



Learn more



| TEST ITEMS | | PN-JC30 | |
|-------------|-------------|-----------------------|--|
| Viscosity | ASTM D 2196 | 600-800 cps(@25°C) | |
| Density | ASTM D 792 | 1.05-1.15g/cm³(@25°C) | |
| Ash content | | <0.1% | |

| Machine model | Number of layouts (regular size) | 1KG resin printable quantity | Printing time (100μm) | Printing time (50μm) |
|---------------|----------------------------------|------------------------------|-----------------------|----------------------|
| D136 | 45-50 | ≥ 1627 | 112min | 220min |
| C01 | 24-28 | ≥ 1627 | 81min | 157min |

Rubber Mold Resin

Application field: Jewelry

● Dark Orange



Learn more



| TEST ITEMS | | PN-RUBBER MOLD | |
|-----------------------------|------------------|-----------------------|--|
| Viscosity | ASTM D 2196 | 600-800cps (@25°C) | |
| Density | ASTM D 792 | 1.05-1.15g/cm³(@25°C) | |
| Hardness | ASTM D 2240 | D85-89 | |
| Flexural strength | ASTM D 790 | 78-90Mpa | |
| Tensile modulus | ASTM D 638 | 40-50Mpa | |
| Heat deflection temperature | ASTM D648 @66PSI | 170-250°C | |

| Machine model | Number of layouts (regular size) | 1KG resin printable quantity | Printing time (100μm) | Printing time (50μm) |
|---------------|----------------------------------|------------------------------|-----------------------|----------------------|
| D136 | 45-50 | ≥ 1627 | 105min | 207min |
| C01 | 24-28 | ≥ 1627 | 74min | 143min |

High-precision Light-curing 3D Printing Solutions

Print every detail for you, capture more subtle and complex details, and perfectly print smooth, burr-free, and almost layer-free models.



HALOT-R6

Compact & Easy for Newbies

Super Compact Resin Printer

Small and exquisite, takes up no space

Light Uniformity

Light uniformity >90%, light intensity 5000μW/cm²

Stable Z-axis Structure

High-precision Z-axis anti-backlash nut effectively suppresses shaking during printing



| SPECIFICATIONS | HALOT-R6 |
|---------------------|------------------------|
| Printing technology | LCD |
| Print size | 130.56×82.62×160mm |
| Machine size | 235.5×230×395.5mm |
| Package size | 298×298×480mm |
| Print speed | Max.60mm/h |
| Layer thickness | 0.01-0.2mm |
| LCD screen size | 6.08" |
| Light intensity | 5000μW/cm ² |
| Light uniformity | > 90% |
| Release film | FEP release film |
| Display screen | 2.8" touch screen |
| Rated voltage | 100-240V~, 50/60Hz |
| Slicer | HALOT BOX/CHITUBOX |
| Languages | 13 languages |
| N.W. | 4.25KG |
| G.W. | 5.8KG |

HALOT-PLAY

Full Play, More affordable

4K 8.9" 4K Resin 3D Printer

8.9-inch LCD screen, 4K resolution, pixel size 50μm

Light Uniformity

Stable Z-axis Structure

A gap-eliminating nut on the Z-axis, combined with precision high-carbon steel guide rails, achieves micrometer-level smoothness and effectively reduces model layer lines.



| SPECIFICATIONS | HALOT-PLAY |
|---------------------|--------------------------|
| Printing technology | LCD |
| Print size | 192×120×200mm |
| Machine size | 325×297×563mm |
| Package size | 395×363×660mm |
| Print speed | Max.60mm/h |
| Layer thickness | 0.01-0.20mm |
| Resolution | 4K (3840*2400) |
| Light intensity | > 3500μW/cm ² |
| Light uniformity | > 70% |
| XY resolution | 50μm |
| Display screen | 4.3" color touch screen |
| Rated voltage | 100-240V~, 50/60Hz |
| Slicer | HALOT BOX/CHITUBOX |
| Languages | English,Chinese |
| N.W. | 9.75KG |
| G.W. | 12.02KG |

HALOT-MAGE

Go Big and 8K with Miniatures

8K 10.3" 8K Print Screen

10.3-inch LCD monochrome screen, 8K resolution, pixel size 29.7μm

Smart Air Purifier

It absorbs irritant resin odor more efficiently

Stable Z-axis Structure

High-quality double linear guide rails, driven by high-power motors, double the smoothness and significantly reduce shaking



| SPECIFICATIONS | HALOT-MAGE |
|---------------------|--|
| Printing technology | LCD MSLA |
| Print size | 228×128×230mm |
| Machine size | 333×270×608mm |
| Package size | 420×350×675mm |
| Print speed | 1-5s/layer |
| Layer thickness | 0.05-0.15mm |
| LCD screen | 10.3" 8K (7680*4320) monochrome screen |
| XY resolution | 29.7μm |
| Light intensity | 5000±10%μW/cm ² |
| Air purifier | Yes |
| Display screen | 4.3" color touch screen |
| Rated voltage | 100-240V~, 50/60Hz |
| Slicer | HALOT BOX/CHITUBOX/Lychee Slicer |
| File Formats | STL/OBJ |
| N.W. | 12KG |
| G.W. | 15KG |

HALOT-MAGE PRO

Hyper-speed 8k Resin Printing

170mm/h Printing Speed

3 to 5x faster than the competition while still keeping the quality

8K 10.3" 8K Print Screen

10.3-inch LCD monochrome screen, 8K resolution, pixel size 29.7μm

Smart Air Purifier

It absorbs irritant resin odor more efficiently

Stable Z-axis Structure

High-quality double linear guide rails, driven by high-power motors, double the smoothness and significantly reduce shaking



| SPECIFICATIONS | HALOT-MAGE PRO |
|---------------------|--|
| Printing technology | LCD MSLA |
| Print size | 228×128×230mm |
| Machine size | 333×270×608mm |
| Package size | 420×350×675mm |
| Print speed | Max.170mm/h |
| Layer thickness | 0.05-0.15mm |
| LCD screen | 10.3" 8K (7680*4320) monochrome screen |
| XY resolution | 29.7μm |
| Light Source | Integral Light Source 3.0 |
| Light uniformity | > 90% |
| Light intensity | 8000±10%μW/cm ² |
| Rated voltage | 100-240V~, 50/60Hz |
| Slicer | HALOT BOX/CHITUBOX/Lychee Slicer |
| File Formats | STL/OBJ |
| N.W. | 13KG |
| G.W. | 15.8KG |

CW01

Washing and curing machine



Fully Cured

360° curing rotating platform

Upgraded Lens UV Lamp Beads

Dual wavelength UV lamp bead strip 385/405nm

Stronger Cleaning Power

Ultra-large whirlpool high-speed cleaning

Large Capacity Cleaning Basket

240 x 160 x 200mm



| SPECIFICATIONS | CW01 |
|------------------|--|
| Machine name | Washing and curing machine |
| Control method | Push-button control |
| Rated voltage | DC 24V |
| Rated power | 60W |
| Mode | Washing and Curing |
| Washing time | 5min/10min/15min/20min/25min/30min |
| Curing time | 5min/10min/15min/20min/25min/30min/ 08:0C/18:0C/33:0C (Suffix C means air drying for 3 minutes and then continue curing) |
| Washing size | 240×160×200mm |
| Curing size | φ200×260mm |
| Machine size | 280×230×372mm |
| Package size | 350×295×423mm |
| Machine language | Chinese/English |
| N.W. | 5.1KG |
| G.W. | 6.4KG |

Low Odor Rigid Resin / Fast Resin / Standard Rigid Resin

Anime figure, decorative item, etc.



● Black ● Grey ● Skin ● Green ● Gamel



*Compatible with LCD/DLP 385-405nm 3D printers

| TEST ITEMS | PC-Rigid 2.0 | |
|----------------------------------|------------------|-----------|
| Viscosity,cps(@25 C) | ASTM D 2196 | 150-250 |
| Density,g/cm³(@25 C) | ASTM D 792 | 1.05-1.20 |
| Hardness,Shore D | ASTM D 2240 | 85-90 |
| Flexural strength,Mpa | ASTM D 790 | 75-110 |
| Tensile strength,Mpa | ASTM D 638 | 40-70 |
| Elongation at break,% | ASTM D 638 | 10-15 |
| Impact strength,notched Izod,J/m | ASTM D 256 | 25-35 |
| Heat deflection temperature, C | ASTM D648 @66PSI | 70-75 |

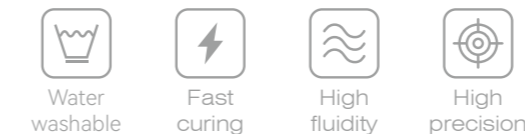


Water Washable Resin 2.0 / Water Washable Resin

Anime figure, decorative item, etc.



● Black ● Grey ● Skin ○ White ● Clear blue



*Compatible with LCD/DLP 385-405nm 3D printers

| TEST ITEMS | PC-WW 2.0 | |
|----------------------------------|------------------|-----------|
| Viscosity,cps(@25 C) | ASTM D 2196 | 150-300 |
| Density,g/cm³(@25 C) | ASTM D 792 | 1.05-1.15 |
| Hardness,Shore D | ASTM D 2240 | 75-78 |
| Flexural strength,Mpa | ASTM D 790 | 75-93 |
| Tensile strength,Mpa | ASTM D 638 | 30-50 |
| Elongation at break,% | ASTM D 638 | 10-15 |
| Impact strength,notched Izod,J/m | ASTM D 256 | 20-30 |
| Heat deflection temperature, C | ASTM D648 @66PSI | 60 |



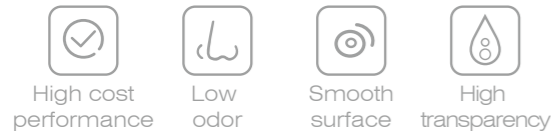
High Transparency Resin

Anime figure, decorative item, etc.

○ Clear



Learn more



*Compatible with LCD/DLP 385-405nm 3D printers

| TEST ITEMS | PC-Clear | |
|----------------------------------|------------------|-----------|
| Viscosity,cps(@25 C) | ASTM D 2196 | 500 |
| Density,g/cm³(@25 C) | ASTM D 792 | 1.05-1.10 |
| Hardness,Shore D | ASTM D 2240 | 80-85 |
| Flexural strength,Mpa | ASTM D 790 | 80-100 |
| Tensile strength,Mpa | ASTM D 638 | 40-65 |
| Elongation at break,% | ASTM D 638 | 10-18 |
| Impact strength,notched Izod,J/m | ASTM D 256 | 40-50 |
| Heat deflection temperature, C | ASTM D648 @66PSI | 60-80 |



Flexible Resin / Elastic Resin

Soft object fabrication, for example watchband.

○ White ● Amber



Learn more



*Compatible with LCD/DLP 385-405nm 3D printers

| TEST ITEMS | PC-Flexible | |
|----------------------------------|------------------|-----------|
| Viscosity,cps(@25 C) | ASTM D 2196 | 200-400 |
| Density,g/cm³(@25 C) | ASTM D 792 | 1.10-1.20 |
| Hardness,Shore D | ASTM D 2240 | 35-55 |
| Flexural strength,Mpa | ASTM D 790 | / |
| Tensile strength,Mpa | ASTM D 638 | 5-10 |
| Elongation at break,% | ASTM D 638 | 300-500 |
| Impact strength,notched Izod,J/m | ASTM D 256 | / |
| Heat deflection temperature, C | ASTM D648 @66PSI | / |



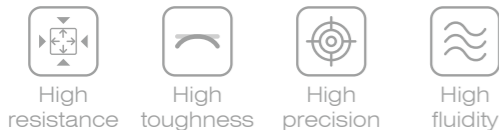
ABS Like Resin 2.0 / ABS Like Resin

Clock and watches, glasses, industrial parts and industrial figurines.

● Black ● Grey ● Skin ● Green ● Gamel



Learn more



*Compatible with LCD/DLP 385-405nm 3D printers

| TEST ITEMS | PC-ABS 2.0 | |
|----------------------------------|------------------|-----------|
| Viscosity,cps(@25 C) | ASTM D 2196 | 300-500 |
| Density,g/cm³(@25 C) | ASTM D 792 | 1.05-1.15 |
| Hardness,Shore D | ASTM D 2240 | 80-85 |
| Flexural strength,Mpa | ASTM D 790 | 80-100 |
| Tensile strength,Mpa | ASTM D 638 | 50-65 |
| Elongation at break,% | ASTM D 638 | 25-40 |
| Impact strength,notched Izod,J/m | ASTM D 256 | 50-80 |
| Heat deflection temperature, C | ASTM D648 @66PSI | 85-95 |



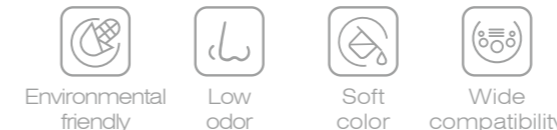
Plant Based Resin / PLA Based Resin

Anime figures and models with high resolution requirements.

● Black ● Grey ● Skin ● Green ● Gamel



Learn more



*Compatible with LCD/DLP 385-405nm 3D printers

| TEST ITEMS | PC-Plant | |
|----------------------------------|------------------|-----------|
| Viscosity,cps(@25 C) | ASTM D 2196 | 150-250 |
| Density,g/cm³(@25 C) | ASTM D 792 | 1.05-1.20 |
| Hardness,Shore D | ASTM D 2240 | 80-85 |
| Flexural strength,Mpa | ASTM D 790 | 60-80 |
| Tensile strength,Mpa | ASTM D 638 | 35-55 |
| Elongation at break,% | ASTM D 638 | 8-15 |
| Impact strength,notched Izod,J/m | ASTM D 256 | 25-40 |
| Heat deflection temperature, C | ASTM D648 @66PSI | 70-80 |



High Fidelity Model Resin / Red Wax

Figures, handicrafts, footwear, teaching and research, toy design, etc.



Learn more



● Black ● Dark gray ○ White ● Skin ● Red wax



Matte finish surface



High accuracy



Easy to colour



Rigidity and flexibility coexist

*Compatible with LCD/DLP 385-405nm 3D printers

| TEST ITEMS | PC-Matte | |
|----------------------------------|------------------|-----------|
| Viscosity,cps(@25 C) | ASTM D 2196 | 150-250 |
| Density,g/cm³(@25 C) | ASTM D 792 | 1.10-1.25 |
| Hardness,Shore D | ASTM D 2240 | 85-90 |
| Flexural strength,Mpa | ASTM D 790 | 60-90 |
| Tensile strength,Mpa | ASTM D 638 | 40-65 |
| Elongation at break,% | ASTM D 638 | 10-14 |
| Impact strength,notched Izod,J/m | ASTM D 256 | 40-55 |
| Heat deflection temperature, C | ASTM D648 @66PSI | 70-80 |



High Temp Resin

Jewelry ring die-casting master molds, high temperature resistant parts, etc.



Learn more



● Clear orange



High temperature resistance



High dimensional stability



High precision



Good wear resistance

*Compatible with LCD/DLP 385-405nm 3D printers

| TEST ITEMS | PC-HT | |
|----------------------------------|------------------|-----------|
| Viscosity,cps(@25 C) | ASTM D 2196 | 600-800 |
| Density,g/cm³(@25 C) | ASTM D 792 | 1.05-1.15 |
| Hardness,Shore D | ASTM D 2240 | 85-89 |
| Flexural strength,Mpa | ASTM D 790 | 78-90 |
| Tensile strength,Mpa | ASTM D 638 | 40-50 |
| Elongation at break,% | ASTM D 638 | 8-12 |
| Impact strength,notched Izod,J/m | ASTM D 256 | 20-30 |
| Heat deflection temperature, C | ASTM D648 @66PSI | 170-250 |



Pellet 3D Printing Solution

Pellet 3D printer + Pellet material + Dryer

FGF 3D printing is the next evolution in 3D printing technology. These direct-drive pellet extrusion-based printers can print using virgin or recycled pellets, flakes, or regrind materials, bringing us closer to the dream of a circular economy.



Material Recovery



Re-manufacturing of Pellets



PIOCREAT 3D Printing



Model

After Scrapping

• Pellet 3D Printer

• Suction and drying machine



• Various composite materials

G5Ultra

Print size 500×500×400mm



Suitable for More Materials

Compatible with more pellet materials

Max.Nozzle Temp ≤420°C

Screw nozzle design + segmented heating

Max.Print Sped 220mm/s

Printing speed 0.8kg/h
Print faster and increase work efficiency

Heating Bed Temp ≤120°C

Spring steel magnetic attraction platform
Heating up quickly, reducing waiting time for printing



| SPECIFICATIONS | G5Ultra |
|--------------------------|---|
| Molding tech | FGF |
| Printing materials | PLA/PC/ABS/PETG/PETG-GF/PP/TPU/PA-CF/ABS-CF/PC-CF and other composite materials |
| Hotbed temp | ≤120°C |
| Upper nozzle temperature | ≤360°C |
| Lower nozzle temperature | ≤420°C |
| File transfer | USB/WIFI |
| Languages | English/Chinese/German/Spanish/French/Italian/Japanese/Portugal/Russian/Turkish |
| Nozzle diameter | Option 0.4-3mm(standard 0.8 /1.0 /2.0mm) |
| Rated voltage | AC100-110V&AC220-240V 50/60Hz |
| Rated power | 1450W |
| Slicer | Piocreat_Slicer/Cura/Simplify3D |
| Max. hopper capacity | 3L |
| Machine size | 765×890×1040mm |
| Package size | 845×990×510mm |
| N.W. | 43KG |
| G.W. | 70KG |

G5Ultra Printing Model Case

MATERIAL TESTING



MOLD MANUFACTURING



R&D & VERIFICATION



FURNITURE



INDUSTRIAL PARTS



CRAFTSMANSHIP & DESIGN



The G5Ultra can print models with maximum dimensions of 500×500×400mm, meeting a variety of printing needs. It can be used for materials testing, mold manufacturing, industrial parts, furniture and daily necessities, crafts, and the footwear industry. It is compatible with a range of materials to meet the printing requirements of different industries.

G12

Print size 1200×1000×1000mm

- 
Max. Printing Speed 90mm/s
 - Printing speed 3kg/h
 - Print faster and increase work efficiency
- 
Max.Nozzle Temp ≤450°C
 - Screw nozzle design + segmented heating
- 
Powerful Servo Motor
 - Enables superior motion control and unparalleled printing accuracy.
- 
Heating Bed Temp ≤130°C
 - Heating up quickly, reducing waiting time for printing



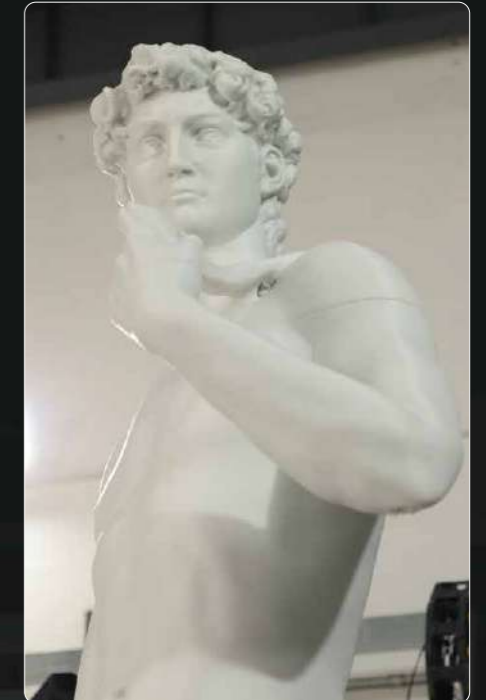
| SPECIFICATIONS | G12 |
|----------------------|---|
| Molding tech | FGF |
| Printing materials | PLA/PETG/ABS/TPU/PETG-GF/PC-CF/PA-GF/PA-CF/EVA/ABS-CF/PLA-CF/PP/PP-GF/ASA, recycle materials, self-developed materials. |
| Hotbed temp | ≤130°C |
| Nozzle tempature | ≤450°C |
| File transfer | USB/WIFI |
| Language | English/Chinese/German/Spanish/French/Italian/Japanese/Portugal/Russian/Turkish |
| Nozzle diameter | 0.8-4mm(standard 1.2 /1.5 /2.0 /3.0 /4.0mm) |
| Rated voltage | AC 220V |
| Rated power | 7000W |
| Slicer | Piocreat_Slicer/Cura/Simplify3D |
| Max. hopper capacity | 20L |
| Machine size | 2135×1775×2305mm |
| Package size | 1960×1760×2140mm |
| N.W. | 750KG |
| G.W. | 1000KG |

G12 Printing Model Case

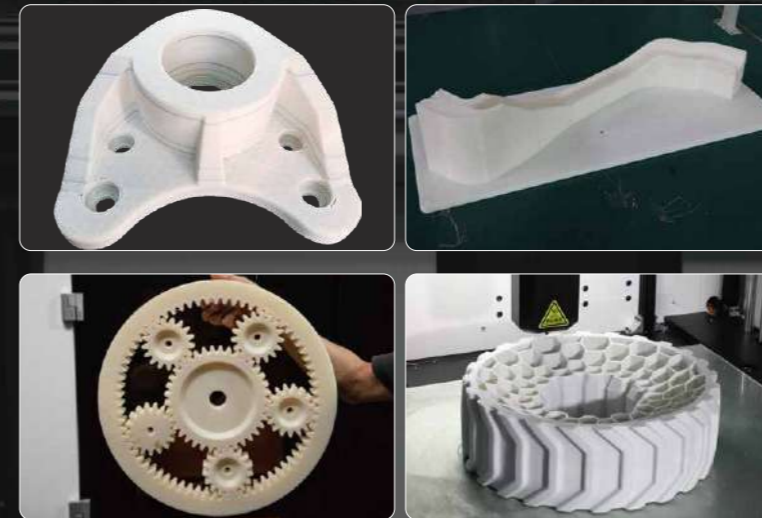
LIVING SUPPLIES



SCULPTURE MAKING



INDUSTRIAL PARTS



LAMP MANUFACTURING



The G12 can print large models with dimensions up to 1200×1000×1000 mm, expanding the range of its printable applications. It covers various fields such as household items, mold manufacturing, industrial parts, lighting manufacturing, sculptures, and the automotive industry. Its focus on professional, production-grade print quality meets the needs of more industrial production requirements.

G40

FGF 3D PRINTER+5-AXIS CNC



Additive and subtractive manufacturing

Integration of screw extrusion 3D printing and CNC five-axis machining

High-speed and high-precision machining

Equipped with 8.5KW, 24000r/min high speed spindle

Large flow screw extrusion

Equipped with 3-8mm high flow screw extruder nozzle

Large working space

3725×2500×1300mm large space

6-partition workbench

Six-zone independently controlled heating workbench
Select areas to control heating based on the printed model



SPECIFICATIONS

G40

| | |
|---|-------------------------|
| Machine size: 5962×4220×4800mm | Slicer: Plocreat_Slicer |
| Three-axis positioning accuracy: 0.1mm/m | Total Power: about 65KW |
| Three-axis repeat positioning accuracy: 0.018mm/m | N.W.: 15000KG |
| Processing materials: Plastic carbon fiber and non-ferrous metals | G.W.: 16000KG |
| Printing materials: PLA/PETG/PVC/ABS/PC/PA/HDPE/TPU/EVA/PC+ABS/PETG+GF/PP+GF/PA+GF/ABS+GF/PC+CF | |

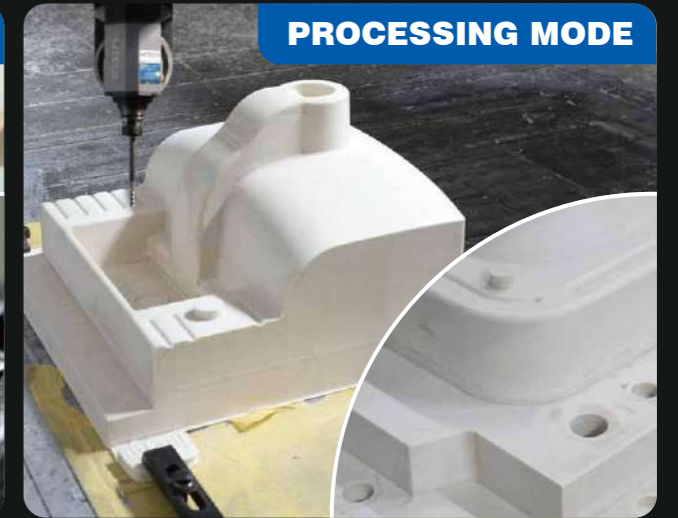
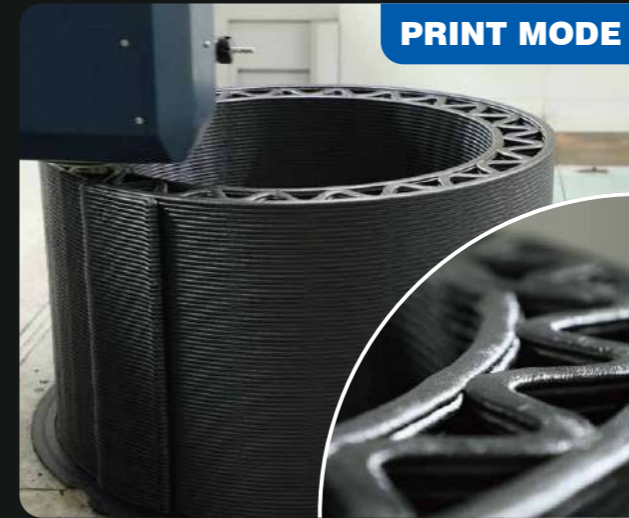
Print Mode

| |
|--------------------------------------|
| Print size: 3725×2500×1330mm |
| Workbench load: 500kg/m ² |
| Maximum heating: 200°C |
| Extrusion volume: Max.25kg/h |
| Print speed: Max.10m/min |
| Feeder storage capacity: 75KG |

Processing mode

| |
|---|
| Processing size: 3400×2500×1330mm |
| Rotation angle: ±120° ASSE A ±320° ASSE C |
| Spindle power: 8.5KW |
| Spindle speed: 24000r/min |
| Processing speed: Max.10m/min |
| Cooling machine power: 2.2KW |

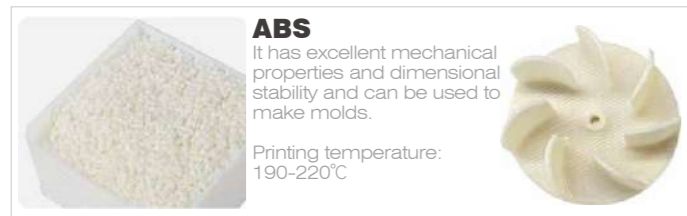



G40 Printing Model Case



The G40 is an integrated manufacturing center for additive and subtractive processes, combining FGF 3D printing and five-axis CNC machining. After 3D printing the model's dimensions and contours, it continues with milling to shape the final product, achieving faster speeds, lower costs, and higher material utilization. It's used to print large to ultra-large parts, molds, models, etc., from reinforced thermoplastic materials. It finds wide application in fields like aerospace, automotive manufacturing, wind power, yachting, home living, and urban landscapes for composite materials.

Pellets

A variety of pellet consumables

| | |
|---|--|
|  <p>ABS It has excellent mechanical properties and dimensional stability and can be used to make molds. Printing temperature: 190-220°C</p> |  <p>ABS+CF Easy to print, excellent strength, outstanding dimensional stability and amazing surface finish. Printing temperature: 220-250°C</p> |
|  <p>PLA(High carbon content) It has good biodegradability and is suitable for indoor decoration, furniture and other scenes. Printing temperature: 190-210°C</p> |  <p>PETG High transparency, easy to print and environmentally friendly. Can be used to make furniture, decorations, and various prototypes. Printing temperature: 230-250°C</p> |
|  <p>PETG+10%GF It has enhanced strength but is more brittle than PETG. It can be used to make furniture, decoration, and various prototypes. Printing temperature: 230-250°C</p> |  <p>PC+CF It can be used to manufacture molds and functional parts with an operating temperature not exceeding 110 degrees. Printing temperature: 270-280°C</p> |
|  <p>TPU It is flexible and elastic, and is suitable for rehabilitation aids and rubber-like products. Printing temperature: 180-195°C</p> |  <p>PP Glass fiber reinforced PP, excellent mechanical properties, suitable for all walks of life. Printing temperature: 270-280°C</p> |
|  <p>PAHT+CF It can withstand high temperatures up to 150°C and is suitable for industrial jigs, fixtures, automotive parts, etc. Printing temperature: 265-290°C</p> |  <p>PEEK It is mainly used in the fields of automobile, electronic information, medical equipment, aerospace, etc. Printing temperature: 450-520°C</p> |
|  <p>PLA(White) It has good biodegradability and is suitable for indoor decoration, furniture and other scenes. Printing temperature: 190-210°C</p> |  <p>PET+CC(calcium carbonate) It is widely used in packaging, electronics, medical care, construction, automobile and other fields. Printing temperature: 280°C</p> |

For more material applications, please consult...

Letter 3D Printing Solution

3D printer + Filament + Curing machine + Acrylic glue

Compared with the traditional production process of advertising characters, using 3D printing to make advertising characters is convenient, fast, low-cost, and rich in effects, which can maximize your creativity and ideas. We believe that 3D printing luminous characters will become a trend.



Font Design



PioCreat 3D printing
Side or panel



Making
the base plate



Install
the light strip



K6

Print size 600×600×85mm



3D Model-Free

Import professional software to generate 3D files

Double-in and Single-out

Non-manually filament switchin just 1 second

Resume Printing Function

No need to worry about power loss or filament running out

Double Gear Double Extrusion

Strong extrusion feeding performance with dual gears



| SPECIFICATIONS | K6 |
|------------------------------|--|
| Molding tech | FDM |
| Slicing software | Piocreat AD |
| Computer operating system | Win10/Win8/Win7 |
| Applicable consumables | PMMA/PETG/PLAA(Blackout / Transmittance) |
| XY-axis positioning accuracy | ≤0.05mm |
| Printing method | SD card |
| Nozzle diameter | 0.6-1.2mm(standard 0.8mm) |
| Heating bed temperature | ≤65°C |
| Nozzle temperature | ≤260°C |
| Number of nozzles | 1 |
| Discharge structure | Double-in and single-out |
| Consumable diameter | 1.75mm |
| Power requirements | AC 110V / 220V |
| Rated power | 1160W |
| Operation speed | ≤150mm/s |
| Machine size | 862×1100×654mm |
| Package Size | 1105×950×360mm |
| N.W. | 44KG |
| G.W. | 49KG |

K8

Print size 800×800×85mm



3D Model-free

Import professional software to generate 3D files

Double-in and Single-out

Non-manually filament switchin just 1 second

Resume Printing Function

No need to worry about power loss or filament running out

One-key Quick Printing

One-key quick printing with easy operation of auto-leveling



| SPECIFICATIONS | K8 |
|------------------------------|---|
| Molding tech | FDM |
| Slicing software | Piocreat AD |
| Computer operating system | Win10/Win8/Win7 |
| Applicable consumables | PMMA/PETG/PLA(Blackout / Transmittance) |
| XY-axis positioning accuracy | ≤0.05mm |
| Printing method | SD card |
| Nozzle diameter | 0.6-1.2mm (standard 0.8mm) |
| Heating bed temperature | ≤65°C |
| Nozzle temperature | ≤260°C |
| Number of nozzles | 1 |
| Discharge structure | Double-in and single-out |
| Consumable diameter | 1.75mm |
| Power requirements | AC 110V / 220V |
| Rated power | 1800W |
| Operation speed | ≤150mm/s |
| Machine size | 1222×1130×700mm |
| Package Size | 1350×1350×720mm |
| N.W. | 77KG |
| G.W. | 138KG |

KC-01

Large Industrial LED letter curing machine



UV Lamp Configuration

10 inserted 30W UV ultraviolet rays curing lamps to ensure good curing effect

Glass Translucent Board

High transmittance and uniform illumination, greatly reduces light decay rate

Timing Illumination

Automated scheduling with intelligent one-button control 30min/60min/90min

Cooling System

Built-in efficient fans to decrease lamp temperature



| SPECIFICATIONS | KC01 |
|----------------|-----------------------|
| Input voltage | AC 110V/220V |
| Rated power | 300W |
| UV lamp power | 30W*10=300W |
| Timing | 30min/60min/90min |
| Machine size | L1000 x W950 x H390mm |
| Package Size | 1020 x 1100 x 610mm |
| N.W. | 54KG |
| G.W. | 98KG |

PETG

Special materials for channel letter 3D printer



opaque/
translucent white



opaque/
translucent silver



opaque/
translucent black



opaque/
translucent yellow



translucent green



translucent blue



translucent light orange



translucent orange



translucent red



Accessories

D series printer accessories



High speed release film
Less releasing resistance to speed up printing and improve printing success rate.



Resin vat
Built-in liquid level reminder to prevent waste caused by excessive dumping.



Print platform
High roughness oxidation sand-blasted platform surface increases the contact area to provide firmer adhesion for printed models during the printing process, and avoid models falling off.



LCD monochrome screen
Monochrome screen with high light transmittance and long service life.

G series printer accessories



Platform glue
Anti-warpage 3D Platform Glue
shake well before use!!!



PEI magnetic platform
Heating up quickly, reducing waiting time for printing. The platform is easy to put and take, can be bent, easy to take the mold.



Nozzles of various types
Various types of nozzles
0.4, 0.8, 1.0, 1.5, 2.0, 3.0, 4.0, etc.



Insulation cover
3D printer insulation cover, thermal insulation, constant temperature printing.



Suction and drying machine
It integrates material suction and drying in one unit, dries materials more efficiently and quickly, and improves printing quality.

Accessories

K series printer accessories



CR-Touch
Independent research and development, multi-point detection, intelligent compensation, easy installation, strong compatibility.



Heater rod
Rapid temperature rise, good temperature resistance.



Nozzle kit
Uniform filament output, temperature and abrasion resistance, easy replacement.



Fan
Strong wind, optimized filament molding.



Platform glue
Anti-warpage 3D Platform Glue
shake well before use!!!



Quick connector
Fast installation, accurate guidance of filament.



Heater block
High temperature resistant alloy to ensure constant temperature of the nozzle.



Extrusion handle kit
High-precision gear matching, smooth input of filament.



Nozzle sensor
Small footprint, high temperature measurement accuracy.



Acrylic glue
Self-developed acrylic glue, bright and light at night.