

www.piocreat3d.com

Shenzhen PioCreat 3d Technology Co., Ltd.

Add :3rd Floor, Building 1, No. 156 Huawang Road, Langkou Community, Dalang Street, Longhua District, Shenzhen, China, 518109

Tel : +86 0755-2103-9743 | +86 199 2521 7796

Inquiry email : info@piocreat3d.com

Technical support : after@piocreat3d.com

Web : www.piocreat3d.com | www.szc3d.com



Learn more

Product Catalog

3D Printing Industry Evangelist

ABOUT PIOCREAT

3D Printer Manufacturing

Shenzhen PioCreat 3d Technology Co., Ltd. is a company specializing in the manufacturing of 3D printers and consumables. Since its establishment in 2015, we have been committed to independent research, development, and innovation, and we hold completely independent intellectual property rights for our product technologies.

As an R&D and manufacturing enterprise providing products and solutions across the entire industry chain — including 3D printers, 3D design software, 3D printing consumables, and 3D printing services — we have built a comprehensive industrial ecosystem.



Certificate of High and New Technology Enterprise

Pioneers Make It Happen

1800⁺
Corporate Customers

150⁺
Professional R&D staff

60⁺
3D Printing Patents





HONORS AND CERTIFICATIONS



R&D AND MANUFACTURING

PioCreat products are categorized into four main systems: dental and jewelry light-curing solutions, consumer-grade light-curing solutions, industrial-grade 3D printing solutions, and channel letter solutions, each designed to meet diverse user needs. These solutions are widely applied across a broad range of industries, including dentistry, healthcare, manufacturing, advertising, education, jewelry, and aviation, among others.



**50000m²
Production Area**



**R&D and
Manufacturing
Center**



**Print Service
Center**

PRODUCT CONTENTS

01

Dental 3D Printing Solution



3D printer+Dental resin+Cleaning machine+UV curing machine

01-14 [▶](#)

02

Jewelry Digital Solutions



Providing the jewelry industry with high-efficiency and high-freedom jewelry molds.

15-19 [▶](#)

03

High-precision Light-curing 3D Printing Solutions



Print every detail for you, capture more subtle and complex details.

20-29 [▶](#)

04

Pellet 3D Printing Solution



Pellet 3D printer + Pellet material + Dryer

30-37 [▶](#)

05

Letter 3D Printing Solution



3D printer + Filament + Curing machine + Acrylic glue

38-42 [▶](#)

06

Accessories



Provide you with complete official accessories support

43-44 [▶](#)

Dental 3D Printing Solution

3D printer+Dental resin+Cleaning machine+UV curing machine

Dental digital technology replaces traditional dental model manufacturing procedures such as taking impressions, turning over impressions, and model scanning, which greatly shortens the time for patients' diagnosis and treatment, improves the comfort of diagnosis and treatment, and achieves the best treatment effect.



DLP resin 3D printer
D158

UV curing machine
UV02

Ultrasonic cleaner
CD-X3

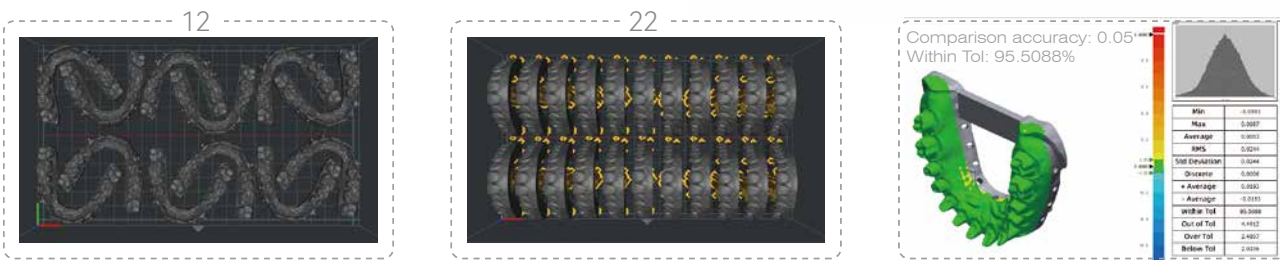
Dental resin
PN-RD

• LCD | Light uniformity 90%

DJ89PLUS

8K 10.3" LCD 3D printer

- 8K 29μm Pixel Size**
10.3" 8K(7680*4320px) monochrome screen
precise sculpting of model details
- Heating Chamber**
chamber heating(20-35°C)
- Automatic Feeding**
Avoid lack of resin material
- Stable Z-axis Structure**
Dual linear guide rails + ball screw



SPECIFICATIONS	DJ89PLUS
Molding tech	LCD
Print size	228×128×100mm
Machine size	450×290×500mm
Print speed	Max.60mm/h
Layer thickness	0.01-0.1mm
XY axis accuracy	29μm
Printing screen	10.3 inch, 8K monochrome
Rated voltage	100-120/200-240V~, 50/60Hz
Slicer	Piocrat BOX (Win7 or above X64, Mac)
Language	13 languages
N.W.	21.75kg
G.W.	26.28kg

DJ68

9K 6.8" LCD 3D Printer

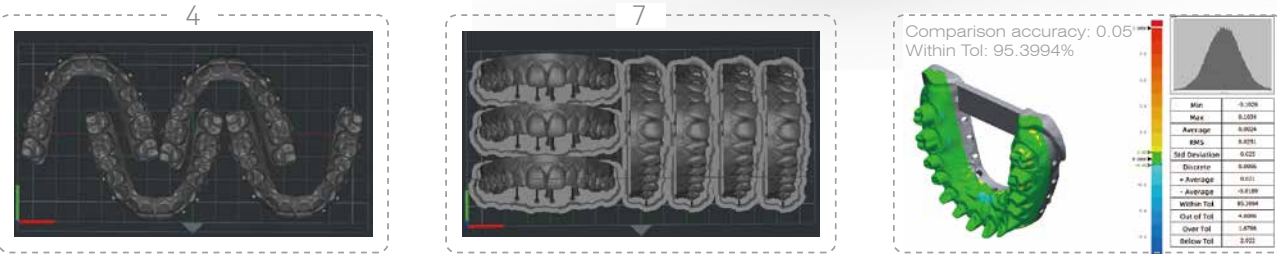
- 9K 18μm Pixel Size**

6.8" 9K(8520*4320px) monochrome screen
precise sculpting of model details
- Integral Light Source 3.0**

Professional exposure has evolved,
with 90%+ irradiation uniformity
- Using a Mask Image**

Ensure that the models produced by the entire
printing platform have consistently high quality
- Stable Z-axis Structure**

Dual linear guide rails + T-shaped screw



SPECIFICATIONS	DJ68
Molding tech	LCD
Print size	153×77×160mm
Machine size	221×221×404mm
Print speed	Max.60mm/h
Layer thickness	0.01-0.1mm
XY axis accuracy	18μm
Printing screen	6.8 inch, 9K monochrome
Rated voltage	100-240V~, 50/60Hz
Slicer	Piocrat BOX (Win7 or above X64, Mac)
Language	13 languages
N.W.	6.6kg
G.W.	8.1kg

D150

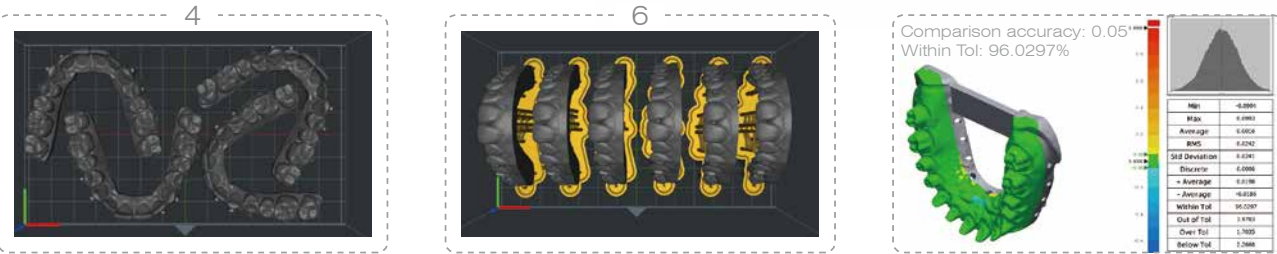
Adjustable light intensity: 6000-20000μw/cm²

- Fast Print**

Print speed up to 80mm/h
1920*1080px
- High Speed Release Film**

Less release resistance
higher printing success rate
- Adjustable Light Intensity**

Reduce exposure time
- Light Engine Life 30,000+Hours**



SPECIFICATIONS	D150
Molding tech	DLP
Print size	144×81×100mm
Machine size	330×300×675mm
Print speed	Max.80mm/h
Layer thickness	0.01-0.1mm
Pixel size	75μm
Rated voltage	100-120/200-240V~, 50/60Hz
Slicer	Piocrat BOX (Win7 or above X64, Mac)
Language	13 languages
N.W.	22.11kg
G.W.	26.5kg

D158

Texas instruments digital micromirror technology

- Automatic Lifting Cover**
Finger touch lifting
- 62µm Pixel Size**
2560*1440px
- High Speed Release Film**
Less release resistance
higher printing success rate
- Stable Z-axis Structure**
Dual linear guide rails + ball screw

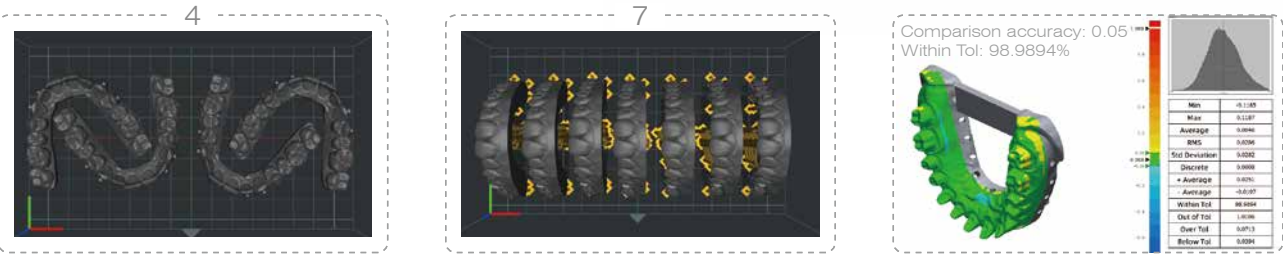


SPECIFICATIONS	D158
Molding tech	DLP
Print size	158×89×100mm
Machine size	280×280×587mm
Print speed	Max.60mm/h
Layer thickness	0.01-0.1mm
Pixel size	62µm
Rated voltage	AC100-240V, 50/60Hz
Slicer	Piocreat BOX (Win7 or above X64, Mac)
Language	13 languages
N.W.	13kg
G.W.	15kg

D160

Texas instruments digital micromirror technology

- 62µm Pixel Size**
2560*1440px
- High Speed Release Film**
Less release resistance
higher printing success rate
- Stable Z-axis Structure**
Dual linear guide rails + ball screw



SPECIFICATIONS	D160
Molding tech	DLP
Print size	158×89×100mm
Machine size	280×264×573mm
Print speed	Max.60mm/h
Layer thickness	0.01-0.1mm
Pixel size	62µm
Rated voltage	AC100-240V, 50/60Hz
Slicer	Piocreat BOX (Win7 or above X64, Mac)
Language	13 languages
N.W.	14kg
G.W.	18.65kg

D190

4K DLP 3D printer for dental

High-precision 4K DLP

3840*2160px

High Stability

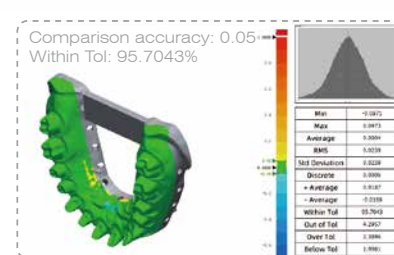
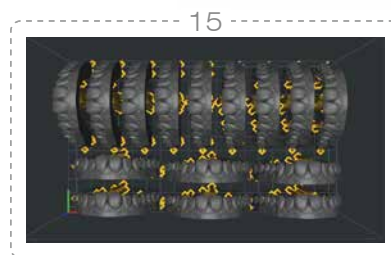
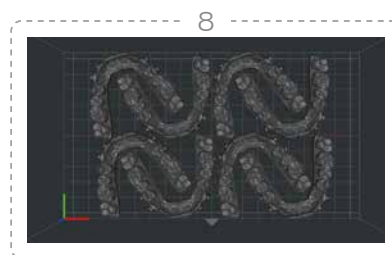
Very high print success rate

Strong Z-axis Lifting Power

57 Stepper motor continuously outputs lifting power



Learn more



SPECIFICATIONS	D190
Molding tech	DLP
Print size	192×108×100mm
Machine size	330×300×675mm
Print speed	Max.60mm/h
Layer thickness	0.01-0.1mm
Pixel size	50μm
Rated voltage	AC100-240V, 50/60 Hz
Slicer	Piocrat BOX (Win7 or above X64, Mac)
Language	13 languages
N.W.	21kg
G.W.	25kg

UV02

High speed curing machine adjustable light intensity

Fast Curing

Curing usually takes 1-5 minutes, reduces distortion due to post-cure exotherm.

Adjustable Light Power

Adjustable light intensity percentage value 5%-100%

Adjustable Wave Length

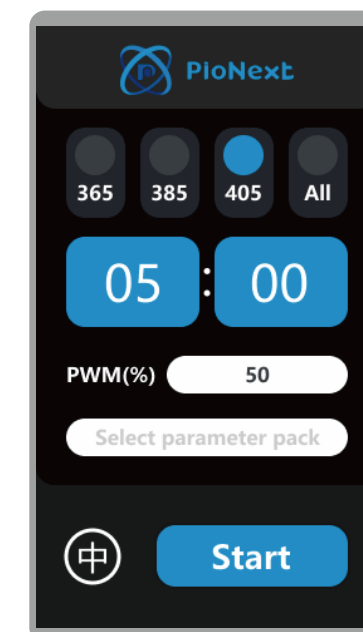
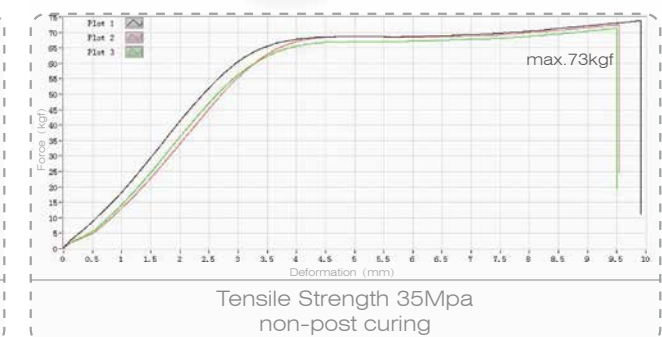
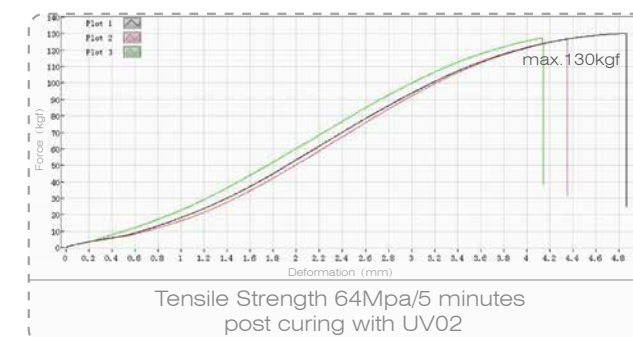
365nm / 385nm / 405nm customizable

Presets and Customizable Cure Settings

8 groups of data



Learn more



SPECIFICATIONS	UV02
Machine properties	High speed UV curing
Machine color	White
Curing size	D180×H120mm
Machine Size	366×300×250mm
Package Size	464×386×334mm
Rated Power	360W
Input Voltage	100-120V~/200-240V~,50-60Hz
Adjustable light intensity ratio	5-100%
Curing optional time	00:01 - 30:00(Max.30min)
N.W.	11kg
G.W.	14kg

UV02 Recommended Curing Parameter

Resin model	Wavelength	Percentage of Light Intensity	Recommended time	curing with water
PN-model	385、405nm	100%	2 (1,5) min	Yes
PN-model 2.0	385、405nm	80%	2 (1,5) min	Yes
PN-RD	385、405nm	100%	3 (2,8) min	Yes
PN-TEMP	385、405nm	100%	10 (5,15) min	Yes
PN-SG	385、405nm	80%	3 (1,8) min	Yes
PN-CAST	385、405nm	100%	3 (1,8) min	Yes
PN-WM	385、405nm	100%	3 (1,5) min	Yes
PN-GM	385、405nm	100%	10s (5s, 30s)	Yes
PN-Try-in	385、405nm	100%	10 (5,15) min	Yes
PN-Denture	385、405nm	100%	15 (10,20) min	Yes

*UV02 is a special equipment for dentistry. Long-time exposure of general consumer resins on the market may cause the risk of model cracking.

CD-X3

Simple operation, one-click cleaning

SPECIFICATIONS	CD-X3
Machine properties	Ultrasonic Cleaning
Tank size	240×135×100(L*W*H)mm
Machine size	265×160×225(L*W*H)mm
Volume	3L
Ultrasonic frequency	40kHz
Ultrasonic power	120W
Heating power	100W
Package size	310×210×280mm
N.W.	3.2kg
G.W.	3.6kg



Before cleaning



After cleaning



Learn more

Ortho model resin

Temperature resistant

Yellow Beige Gray , customizable

SPECIFICATIONS	PN-Model
Hardness	ASTM D2240 D85-90
Flexural modulus	ASTM D790 1400-1800MPa
Flexural strength	ASTM D790 70-90MPa
Elongation at break	ASTM D638 10-15%
Heat deflection temperature	ASTM D648@66PSI 75-85°C
Cytotoxicity	ISO 10993-5
Allergenicity	ISO 10993-10
Irritant	ISO 10993-10

Machine model	Number of layouts (regular size)	1KG resin printable quantity	Printing time (100μm)	Printing time (50μm)
DJ89PLUS	8-10	≥ 80	23min	44min
D158/D160	4-5	≥ 80	17min	28min
D150	2-3	≥ 80	15min	28min
D136	15-17	≥ 80	41min	72min



Learn more



Ortho model resin 2.0

Cost-effective

Yellowish brown Gray , customizable

SPECIFICATIONS	PN-Model 2.0
Hardness	ASTM D2240 D85-90
Flexural modulus	ASTM D790 1200-1600MPa
Flexural strength	ASTM D790 80-95MPa
Tensile modulus	ASTM D638 600-1000MPa
Tensile strength	ASTM D638 40-50MPa
Heat deflection temperature	ASTM D648@66PSI 75-85 C

Machine model	Number of layouts (regular size)	1KG resin printable quantity	Printing time (100μm)	Printing time (50μm)
DJ89PLUS	8-10	≥ 80	23min	44min
D158/D160	4-5	≥ 80	17min	28min
D150	2-3	≥ 80	15min	28min
D136	15-17	≥ 80	41min	72min



Learn more



Surgical guide resin

High transparency

○ Transparent

SPECIFICATIONS	PN-SG	
----------------	-------	--

Hardness	ASTM D2240	D75-85
Tension strength	ASTM D638	40-60MPa
Elongation at Break	ASTM D638	10-15%
Flexural Strength	ASTM D790	100-120MPa
Cytotoxicity	ISO 10993-5	
Allergenicity	ISO 10993-10	
Irritant	ISO 10993-10	

Machine model	Number of layouts (regular size)	1KG resin printable quantity	Printing time (100μm)	Printing time (50μm)
DJ89PLUS	10-11	≥ 180	44min	79min
D158/D160	3-4	≥ 150	39min	74min
D150	3-4	≥ 150	35min	68min
D136	15-16	≥ 195	50min	90min



Dental casting resin

Residue free

● Cherry red ● Green

SPECIFICATIONS	PN-Cast	
----------------	---------	--

Hardness	ASTM D2240	D80-85
Flexural modulus	ASTM D790	1500-2000MPa
Flexural strength	ASTM D790	45-65MPa
Bakeout temperature	/	1.5h@850°C

Machine model	Number of layouts (regular size)	1KG resin printable quantity	Printing time (100μm)	Printing time (50μm)
DJ89PLUS	28-29	≥ 600	34min	60min
D158/D160	11-12	≥ 550	27min	52min
D150	10-11	≥ 550	27min	52min
D136	45-48	≥ 600	37min	66min



Removable die model resin

Scratch resistance

● Wheat complexion ● Gray , customizable

SPECIFICATIONS	PN-RD	
----------------	-------	--

Hardness	ASTM D2240	D85-90
Flexural modulus	ASTM D790	1500-2000MPa
Flexural strength	ASTM D790	60-80MPa
Elongation at break	ASTM D638	10-15%
Cytotoxicity	ISO 10993-5	
Allergenicity	ISO 10993-10	
Irritant	ISO 10993-10	

Machine model	Number of layouts (regular size)	1KG resin printable quantity	Printing time (100μm)	Printing time (50μm)
DJ89PLUS	10-11	≥ 140	43min	77min
D158/D160	4-5	≥ 120	43min	70min
D150	4	≥ 150	29min	56min
D136	18-19	≥ 80	47min	87min



Temporary restoration resin

A1/A2/A3/B1/BL1

● A1 ● A2 ● A3 ● B1 ● BL1 , customizable

SPECIFICATIONS	PN-Temp	
----------------	---------	--

Hardness	ASTM D2240	D85-90
Flexural modulus	ASTM D790	2000-3000MPa
Flexural strength	ASTM D790	100-140MPa
Tensile modulus	ASTM D638	1100-1500MPa
Tensile strength	ASTM D638	65-85MPa
Elongation at break	ASTM D638	10-15%
Water absorption	ASTM D570	<1.0%
Cytotoxicity	ISO 10993-5	
Allergenicity/Irritant	ISO 10993-10	

Machine model	Number of layouts (regular size)	1KG resin printable quantity	Printing time (100μm)	Printing time (50μm)
DJ89PLUS	11-12	≥ 300	45min	81min
D158/D160	6-7	≥ 265	31min	60min
D150	3-4	≥ 280	38min	74min



Try-in resin

Wear and use for a short period (1 month)

A2 , customizable



Learn more



SPECIFICATIONS			PN-Try-in	
Hardness	ASTM D2240		D85-90	
Flexural modulus	ASTM D790		1800-2500MPa	
Flexural strength	ASTM D790		80-100MPa	
Tensile modulus	ASTM D638		600-900MPa	
Tensile strength	ASTM D638		55-65MPa	
Elongation at break	ASTM D638		12-16%	
Water absorption	ASTM D570		<1.0%	
Cytotoxicity	ISO 10993-5			
Allergenicity/Irritant	ISO 10993-10			

Machine model	Number of layouts (regular size)	1KG resin printable quantity	Printing time (100μm)	Printing time (50μm)
DJ89PLUS	5-6	≥ 60	55min	75min
D158/D160	2-3	≥ 45	40min	70min
D150	2-3	≥ 45	40min	67min

Denture base resin

Can be worn for a long time (1 to 3 years)

Red



Learn more



SPECIFICATIONS			PN-Denture	
Hardness	ASTM D2240		D85-90	
Flexural modulus	ASTM D790		3000-4000Mpa	
Flexural strength	ASTM D790		130-150Mpa	
Tensile modulus	ASTM D638		1500-2000MPa	
Tensile strength	ASTM D638		80-100MPa	
Elongation at break	ASTM D638		25-30%	
Water absorption	ASTM D570		<1.0%	
In vitro cytotoxicity	ISO 10993-5			
Irritation	ISO 10993-23			
Skin sensitization	ISO 10993-10			
Pyrogen / systemic toxicity	ISO 10993-11			
Genotoxicity, carcinogenic and reproductive toxicity	ISO 10993-3			

Machine model	Number of layouts (regular size)	1KG resin printable quantity	Printing time (100μm)	Printing time (50μm)
DJ89PLUS	5-6	≥ 60	55min	75min

Water-washable dental resin

Water-washable

Dark wheat skin , customizable



Learn more



SPECIFICATIONS			PN-WM	
Hardness	ASTM D2240		D85-90	
Flexural modulus	ASTM D790		1000-1500MPa	
Flexural strength	ASTM D790		60-75MPa	
Tensile modulus	ASTM D638		600-1000MPa	
Tensile strength	ASTM D638		40-55MPa	
Elongation at break	ASTM D638		10-15%	
Heat deflection temperature	ASTM D648@66PSI		75-80 C	

Machine model	Number of layouts (regular size)	1KG resin printable quantity	Printing time (100μm)	Printing time (50μm)
DJ89PLUS	5-6	≥ 80	29min	44min
D158/D160	2-3	≥ 80	32min	61min
D150	2-3	≥ 80	30min	55min
D136	11-12	≥ 100	35min	62min

Gingiva resin

Excellent elasticity

Gingival red



Learn more



SPECIFICATIONS			PN-GM	
Hardness	ASTM D2240		A30-50	
Tensile strength	ASTM D 412		8-15MPa	
Elongation at break	ASTM D 412		300-400%	
Tear strength	ASTM D 624		12-18kN/m	

Machine model	Number of layouts (regular size)	1KG resin printable quantity	Printing time (100μm)	Printing time (50μm)
DJ89PLUS	29-30	≥ 1000	34min	59min
D158/D160	10-12	≥ 1100	30min	57min
D150	7-8	≥ 700	30min	57min
D136	40-42	≥ 1100	40min	71min

Jewelry Digital Solutions

3D printed resin models replace wax models, providing the jewelry industry with high-efficiency and high-freedom jewelry molds.



• LCD | Light uniformity **90%**

D136

7K 13.6" LCD 3D Printer

- 7K 46μm Pixel Size**
13.6" 7K(6480*3600px) monochrome screen
precise sculpting of model details
- High Speed Release Film**
Less release resistance higher printing
success rate
- Large Printing Size**
298×165×300mm
- Stable Z-axis Structure**
Dual linear guide rails + ball screw



SPECIFICATIONS	D136
Molding tech	LCD
Print size	298×165×300mm
Machine size	480×376×770mm
Print speed	Max.70mm/h
Layer thickness	0.01-0.1mm
resolution	6480*3600px
XY axis accuracy	46μm
Printing screen	13.6 inch,7K monochrome
Printing platform	Sand blasting oxidation platform with holes
Lifting speed	60-180mm/min
Print speed	1~4s/layer
Rated voltage	AC100-240V 50/60Hz
Slicer	Piocreant BOX (Win7 or above X64, Mac)
Language	13 languages
N.W.	33.8kg
G.W.	51.2kg

C01

14K Ultra-high precision 3D printer

- 14K

10.1" 14K Monochrome Screen

14K ultra-high precision
- 16.8μm*24.8μm

13320*5120px
- Print Platform

Sand blasting oxidation platform
- Stable Z-axis Structure

Dual linear guide rails + ball screw



SPECIFICATIONS	C01
Molding tech	LCD
Print size	223×126×200mm
Machine size	340×292×552mm
Package size	480×425×720mm
Print speed	Max.70mm/h
Layer thickness	0.01-0.1mm
Resolution	13320*5120
Pixel size	16.8μm*24.8μm
Trough capacity	1000ml
Z-axis type	Dual linear guide rails + ball screw
Print platform	Sand blasting oxidation platform with holes
Rated voltage	100-120/200-240V~, 50/60Hz
Slicer	Piocreat BOX (Win7 or above X64, Mac)
Language	13 languages
N.W.	15.77kg
G.W.	20.55kg

Castable Wax Resin

Application Field: Jewelry, wax content 15%

Blue



TEST ITEMS	PN-JC15
Viscosity	ASTM D 2196 50-100 cps(@25°C)
Density	ASTM D 792 1.05-1.15g/cm³(@25°C)
Ash content	<0.1%



Machine model	Number of layouts (regular size)	1KG resin printable quantity	Printing time (100μm)	Printing time (50μm)
D136	45-50	≥ 1627	129min	253min
C01	24-28	≥ 1627	88min	172min

Castable White Wax Resin

Application field: Jewelry, wax content 20%

Dark Green



TEST ITEMS	PN-JC20
Viscosity	ASTM D 2196 50-150 cps (@25°C)
Density	ASTM D 792 1.05-1.15g/cm³(@25°C)
Ash content	<0.1%



Machine model	Number of layouts (regular size)	1KG resin printable quantity	Printing time (100μm)	Printing time (50μm)
D136	45-50	≥ 1627	134min	262min
C01	24-28	≥ 1627	96min	182min

Castable High Wax Resin

Application field: Jewelry, wax content 30%

Black Green Yellow Orange



Learn more



TEST ITEMS	PN-JC30
------------	---------

Viscosity	ASTM D 2196	600-800 cps(@25°C)
Density	ASTM D 792	1.05-1.15g/cm³(@25°C)
Ash content		<0.1%



Machine model	Number of layouts (regular size)	1KG resin printable quantity	Printing time (100μm)	Printing time (50μm)
D136	45-50	≥ 1627	112min	220min
C01	24-28	≥ 1627	81min	157min

Rubber Mold Resin

Application field: Jewelry

Dark Orange



Learn more



TEST ITEMS	PN-RUBBER MOLD
------------	----------------

Viscosity	ASTM D 2196	600-800cps (@25°C)
Density	ASTM D 792	1.05-1.15g/cm³(@25°C)
Hardness	ASTM D 2240	D85-89
Flexural strength	ASTM D 790	78-90Mpa
Tensile modulus	ASTM D 638	40-50Mpa
Heat deflection temperature	ASTM D648 @66PSI	170-250°C



Machine model	Number of layouts (regular size)	1KG resin printable quantity	Printing time (100μm)	Printing time (50μm)
D136	45-50	≥ 1627	105min	207min
C01	24-28	≥ 1627	74min	143min

High-precision Light-curing 3D Printing Solutions

Print every detail for you, capture more subtle and complex details, and perfectly print smooth, burr-free, and almost layer-free models.



HALOT-R6

Compact & Easy for Newbies

- Super Compact Resin Printer**

Small and exquisite, takes up no space
- Light Uniformity**

Light uniformity>90%, light intensity 5000μW/cm²
- Stable Z-axis Structure**

High-precision Z-axis anti-backlash nut effectively suppresses shaking during printing



SPECIFICATIONS	HALOT-R6
Printing technology	LCD
Print size	130.56×82.62×160mm
Machine size	235.5×230×395.5mm
Package size	298×298×480mm
Print speed	Max.60mm/h
Layer thickness	0.01-0.2mm
LCD screen size	6.08"
Light intensity	5000μW/cm²
Light uniformity	> 90%
Release film	FEP release film
Display screen	2.8" touch screen
Rated voltage	100-240V~, 50/60Hz
Slicer	HALOT BOX/CHITUBOX
Languages	13 languages
N.W.	4.25kg
G.W.	5.8kg

HALOT-PLAY

Full Play, More affordable

- 4K 8.9" 4K Resin 3D Printer**

8.9-inch LCD screen, 4K resolution, pixel size 50μm
- Light Uniformity**
- Stable Z-axis Structure**

A gap-eliminating nut on the Z-axis, combined with precision high-carbon steel guide rails, achieves micrometer-level smoothness and effectively reduces model layer lines.



SPECIFICATIONS	HALOT-PLAY
Printing technology	LCD
Print size	192×120×200mm
Machine size	325×297×563mm
Package size	395×363×660mm
Print speed	Max.60mm/h
Layer thickness	0.01-0.20mm
Resolution	4K (3840*2400)
Light intensity	> 3500μW/cm²
Light uniformity	> 70%
XY resolution	50μm
Display screen	4.3" color touch screen
Rated voltage	100-240V~, 50/60Hz
Slicer	HALOT BOX/CHITUBOX
Languages	English,Chinese
N.W.	9.75kg
G.W.	12.02kg

HALOT-MAGE

Go Big and 8K with Miniatures

8K 10.3" 8K Print Screen

10.3-inch LCD monochrome screen, 8K resolution, pixel size 29.7μm

Smart Air Purifier

It absorbs irritant resin odor more efficiently

Stable Z-axis Structure

High-quality double linear guide rails, driven by high-power motors, double the smoothness and significantly reduce shaking



SPECIFICATIONS	HALOT-MAGE
Printing technology	LCD MSLA
Print size	228×128×230mm
Machine size	333×270×608mm
Package size	420×350×675mm
Print speed	1-5s/layer
Layer thickness	0.05-0.15mm
LCD screen	10.3" 8K (7680*4320) monochrome screen
XY resolution	29.7μm
Light intensity	5000±10%μW/cm²
Air purifier	Yes
Display screen	4.3" color touch screen
Rated voltage	100-240V~, 50/60Hz
Slicer	HALOT BOX/CHITUBOX/Lychee Slicer
File Formats	STL/OBJ
N.W.	12kg
G.W.	15kg

HALOT-MAGE PRO

Hyper-speed 8k Resin Printing

170mm/h Printing Speed

3 to 5x faster than the competition while still keeping the quality

8K 10.3" 8K Print Screen

10.3-inch LCD monochrome screen, 8K resolution, pixel size 29.7μm

Smart Air Purifier

It absorbs irritant resin odor more efficiently

Stable Z-axis Structure

High-quality double linear guide rails, driven by high-power motors, double the smoothness and significantly reduce shaking



SPECIFICATIONS	HALOT-MAGE PRO
Printing technology	LCD MSLA
Print size	228×128×230mm
Machine size	333×270×608mm
Package size	420×350×675mm
Print speed	Max.170mm/h
Layer thickness	0.05-0.15mm
LCD screen	10.3" 8K (7680*4320) monochrome screen
XY resolution	29.7μm
Light Source	Integral Light Source 3.0
Light uniformity	> 90%
Light intensity	8000±10%μW/cm²
Rated voltage	100-240V~, 50/60Hz
Slicer	HALOT BOX/CHITUBOX/Lychee Slicer
File Formats	STL/OBJ
N.W.	13kg
G.W.	15.8kg

CW01

Washing and curing machine

- Fully Cured**
360° curing rotating platform
- Upgraded Lens UV Lamp Beads**
Dual wavelength UV lamp bead strip 385/405nm
- Stronger Cleaning Power**
Ultra-large whirlpool high-speed cleaning
- Large Capacity Cleaning Basket**
240 x 160 x 200mm



SPECIFICATIONS	CW01
Machine name	Washing and curing machine
Control method	Push-button control
Rated voltage	DC 24V
Rated power	60W
Mode	Washing and Curing
Washing time	5min/10min/15min/20min/25min/30min
Curing time	5min/10min/15min/20min/25min/30min/ 08:0C/18:0C/33:0C (Suffix C means air drying for 3 minutes and then continue curing)
Washing size	240×160×200mm
Curing size	φ200×260mm
Machine size	280×230×372mm
Package size	350×295×423mm
Machine language	Chinese/English
N.W.	5.1kg
G.W.	6.4kg

Low Odor Rigid Resin / Fast Resin / Standard Rigid Resin

Anime figure, decorative item, etc.

Black Grey Skin Green Gamel

- High precision
- Low odor
- Fast curing
- High fluidity

*Compatible with LCD/DLP 385-405nm 3D printers

TEST ITEMS	PC-Rigid 2.0	
Viscosity,cps(@25 C)	ASTM D 2196	150-250
Density,g/cm³(@25 C)	ASTM D 792	1.05-1.20
Hardness,Shore D	ASTM D 2240	85-90
Flexural strength,Mpa	ASTM D 790	75-110
Tensile strength,Mpa	ASTM D 638	40-70
Elongation at break,%	ASTM D 638	10-15
Impact strength,notched Izod,J/m	ASTM D 256	25-35
Heat deflection temperature, °C	ASTM D648 @66PSI	70-75



Water Washable Resin 2.0 / Water Washable Resin

Anime figure, decorative item, etc.

Black Grey Skin White Clear blue

- Water washable
- Fast curing
- High fluidity
- High precision

*Compatible with LCD/DLP 385-405nm 3D printers

TEST ITEMS	PC-WW 2.0	
Viscosity,cps(@25 C)	ASTM D 2196	150-300
Density,g/cm³(@25 C)	ASTM D 792	1.05-1.15
Hardness,Shore D	ASTM D 2240	75-78
Flexural strength,Mpa	ASTM D 790	75-93
Tensile strength,Mpa	ASTM D 638	30-50
Elongation at break,%	ASTM D 638	10-15
Impact strength,notched Izod,J/m	ASTM D 256	20-30
Heat deflection temperature, °C	ASTM D648 @66PSI	60



High Transparency Resin

Anime figure, decorative item, etc.

○ Clear



Learn more



- Cost-effective
- Low odor
- Smooth surface
- High transparency

*Compatible with LCD/DLP 385-405nm 3D printers

TEST ITEMS	PC-Clear	
Viscosity,cps(@25℃)	ASTM D 2196	500
Density,g/cm³(@25℃)	ASTM D 792	1.05-1.10
Hardness,Shore D	ASTM D 2240	80-85
Flexural strength,Mpa	ASTM D 790	80-100
Tensile strength,Mpa	ASTM D 638	40-65
Elongation at break,%	ASTM D 638	10-18
Impact strength,notched Izod,J/m	ASTM D 256	40-50
Heat deflection temperature,℃	ASTM D648 @66PSI	60-80



ABS Like Resin 2.0 / ABS Like Resin

Clock and watches, glasses, industrial parts and industrial figures.

● Black ● Grey ● Skin ● Green ● Gamel



Learn more



- High resistance
- High toughness
- High precision
- High fluidity

*Compatible with LCD/DLP 385-405nm 3D printers

TEST ITEMS	PC-ABS 2.0	
Viscosity,cps(@25℃)	ASTM D 2196	300-500
Density,g/cm³(@25℃)	ASTM D 792	1.05-1.15
Hardness,Shore D	ASTM D 2240	80-85
Flexural strength,Mpa	ASTM D 790	80-100
Tensile strength,Mpa	ASTM D 638	50-65
Elongation at break,%	ASTM D 638	25-40
Impact strength,notched Izod,J/m	ASTM D 256	50-80
Heat deflection temperature,℃	ASTM D648 @66PSI	85-95



Flexible Resin / Elastic Resin

Soft object fabrication, for example watchband.

○ White ● Amber



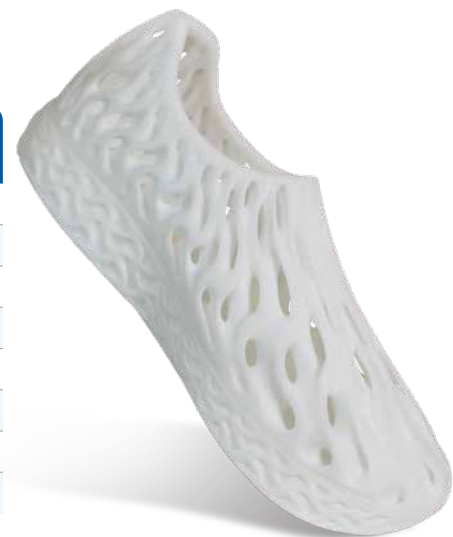
Learn more



- Softness characteristics
- Good wear resistance
- Smooth surface
- Low curing time

*Compatible with LCD/DLP 385-405nm 3D printers

TEST ITEMS	PC-Flexible	
Viscosity,cps(@25℃)	ASTM D 2196	200-400
Density,g/cm³(@25℃)	ASTM D 792	1.10-1.20
Hardness,Shore D	ASTM D 2240	35-55
Flexural strength,Mpa	ASTM D 790	/
Tensile strength,Mpa	ASTM D 638	5-10
Elongation at break,%	ASTM D 638	300-500
Impact strength,notched Izod,J/m	ASTM D 256	/
Heat deflection temperature,℃	ASTM D648 @66PSI	/



Plant Based Resin / PLA Based Resin

Anime figures and models with high resolution requirements.

● Black ● Grey ● Skin ● Green ● Gamel



Learn more



- Environmental friendly
- Low odor
- Soft color
- Wide compatibility

*Compatible with LCD/DLP 385-405nm 3D printers

TEST ITEMS	PC-Plant	
Viscosity,cps(@25℃)	ASTM D 2196	150-250
Density,g/cm³(@25℃)	ASTM D 792	1.05-1.20
Hardness,Shore D	ASTM D 2240	80-85
Flexural strength,Mpa	ASTM D 790	60-80
Tensile strength,Mpa	ASTM D 638	35-55
Elongation at break,%	ASTM D 638	8-15
Impact strength,notched Izod,J/m	ASTM D 256	25-40
Heat deflection temperature,℃	ASTM D648 @66PSI	70-80

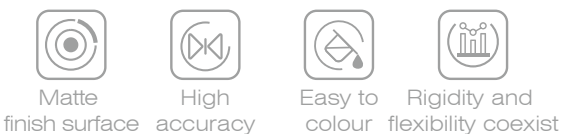


High Fidelity Model Resin / Red Wax

Figures, handicrafts, footwear, teaching and research, toy design, etc.



● Black ● Dark gray ○ White ● Skin ● Red wax



*Compatible with LCD/DLP 385-405nm 3D printers

TEST ITEMS	PC-Matte	
Viscosity,cps(@25℃)	ASTM D 2196	150-250
Density,g/cm³(@25℃)	ASTM D 792	1.10-1.25
Hardness,Shore D	ASTM D 2240	85-90
Flexural strength,Mpa	ASTM D 790	60-90
Tensile strength,Mpa	ASTM D 638	40-65
Elongation at break,%	ASTM D 638	10-14
Impact strength,notched Izod,J/m	ASTM D 256	40-55
Heat deflection temperature,℃	ASTM D648 @66PSI	70-80



High Temp Resin

Jewelry ring die-casting master molds, high temperature resistant parts, etc.



● Clear orange



*Compatible with LCD/DLP 385-405nm 3D printers

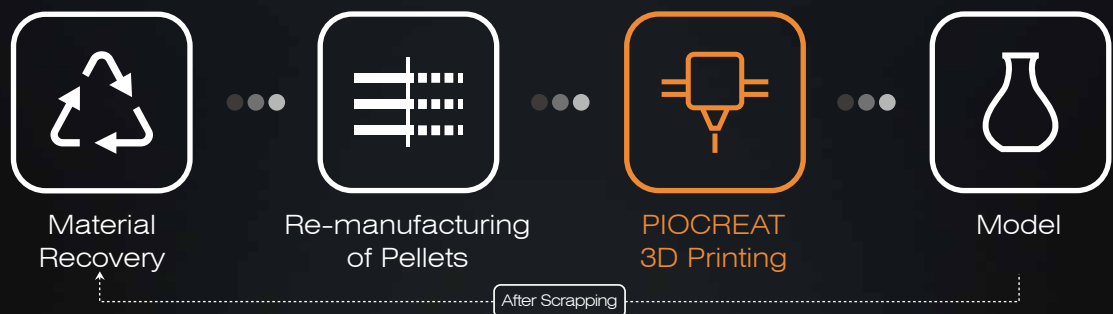
TEST ITEMS	PC-HT	
Viscosity,cps(@25℃)	ASTM D 2196	600-800
Density,g/cm³(@25℃)	ASTM D 792	1.05-1.15
Hardness,Shore D	ASTM D 2240	85-89
Flexural strength,Mpa	ASTM D 790	78-90
Tensile strength,Mpa	ASTM D 638	40-50
Elongation at break,%	ASTM D 638	8-12
Impact strength,notched Izod,J/m	ASTM D 256	20-30
Heat deflection temperature,℃	ASTM D648 @66PSI	170-250



Pellet 3D Printing Solution

Pellet 3D printer + Pellet material + Dryer

FGF 3D printing is the next evolution in 3D printing technology. These direct-drive pellet extrusion-based printers can print using virgin or recycled pellets, flakes, or regrind materials, bringing us closer to the dream of a circular economy.



• Pellet 3D Printer

• Suction and drying machine



• Various composite materials

G5Ultra

Print size 500×500×400mm

Suitable for More Materials

Compatible with more pellet materials

Max.Nozzle Temp ≤420°C

Screw nozzle design + segmented heating

Max.Print Sped 220mm/s

Printing speed 0.8kg/h
Print faster and increase work efficiency

Heating Bed Temp ≤120°C

Spring steel magnetic attraction platform
Heating up quickly, reducing waiting time for printing



SPECIFICATIONS	G5Ultra
Molding tech	FGF
Printing materials	PLA/PC/ABS/PETG/PETG-GF/PP/TPU/PA-CF/ ABS-CF/PC-CF and other composite materials
Hotbed temp	≤120°C
Upper nozzle temperature	≤360°C
Lower nozzle temperature	≤420°C
File transfer	USB/WIFI
Languages	English/Chinese/German/Spanish/French/ Italian/Japanese/Portugal/Russian/Turkish
Nozzle diameter	0.4-2.0mm (optional 3.0mm)Standard: 0.8/1.0/2.0mm
Rated voltage	AC100-110V&AC220-240V 50/60Hz
Rated power	1450W
Slicer	Piocreat_Slicer/Cura/Simplify3D
Max. hopper capacity	6500mL
Machine size	765×890×1040mm
Package size	845×990×510mm
N.W.	43kg
G.W.	70kg

G5Ultra Printing Model Case

MATERIAL TESTING



MOLD MANUFACTURING



R&D & VERIFICATION



FURNITURE



INDUSTRIAL PARTS



CRAFTSMANSHIP & DESIGN



The G5Ultra can print models with maximum dimensions of 500×500×400mm, meeting a variety of printing needs. It can be used for materials testing, mold manufacturing, industrial parts, furniture and daily necessities, crafts, and the footwear industry. It is compatible with a range of materials to meet the printing requirements of different industries.

G12

Print size 1200×1000×1000mm

- 
Max. Printing Speed 90mm/s

Printing speed 3kg/h
Print faster and increase work efficiency
- 
Max.Nozzle Temp ≤450°C

Screw nozzle design + segmented heating
- 
Powerful Servo Motor

Enables superior motion control and unparalleled printing accuracy.
- 
Heating Bed Temp ≤130°C

Heating up quickly,
reducing waiting time for printing



SPECIFICATIONS	G12
Molding tech	FGF
Printing materials	PLA/PETG/ABS/TPU/PETG-GF/PC-CF/PA-GF/PA-CF/EVA/ABS-CF/PLA-CF/PP/PP-GF/ASA, recycle materials,self-developed materials.
Hotbed temp	≤130℃
Nozzle tempature	≤450℃
File transfer	USB/WIFI
Language	English/Chinese/German/Spanish/French/Italian/Japanese/Portugal/Russian/Turkish
Nozzle diameter	0.8-4mm(standard 1.2 /1.5 /2.0 /3.0 /4.0mm)
Rated voltage	AC 220V
Rated power	7000W
Slicer	Piocreat_Slicer/Cura/Simplify3D
Max. hopper capacity	20L
Machine size	2135×1775×2305mm
Package size	1980×1810×2150mm
N.W.	750kg
G.W.	1285kg

G12 Printing Model Case

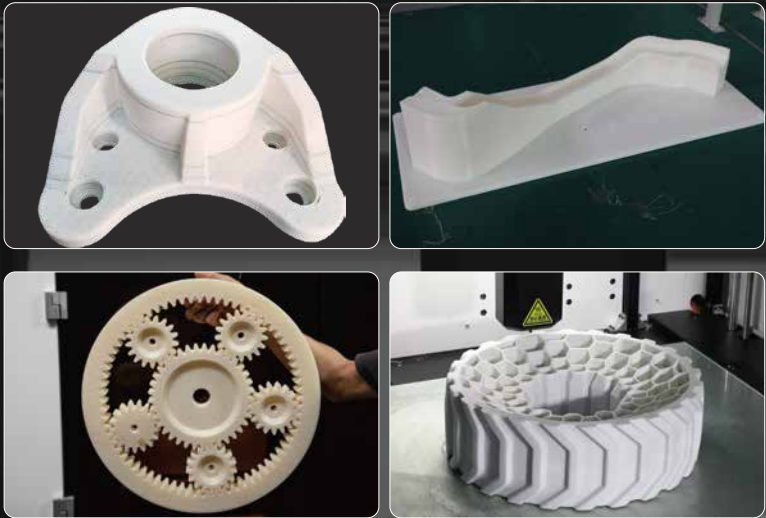
LIVING SUPPLIES



SCULPTURE MAKING



INDUSTRIAL PARTS



LAMP MANUFACTURING



The G12 can print large models with dimensions up to 1200×1000×1000 mm, expanding the range of its printable applications. It covers various fields such as household items, mold manufacturing, industrial parts, lighting manufacturing, sculptures, and the automotive industry. Its focus on professional, production-grade print quality meets the needs of more industrial production requirements.

G40

FGF 3D PRINTER+5-AXIS CNC

Additive and subtractive manufacturing

Integration of screw extrusion 3D printing and CNC five-axis machining

High-speed and high-precision machining

Equipped with 8.5KW, 24000r/min high speed spindle

Large flow screw extrusion

Equipped with 3-8mm high flow screw extruder nozzle

Large working space

3725×2500×1300mm large space

6-partition workbench

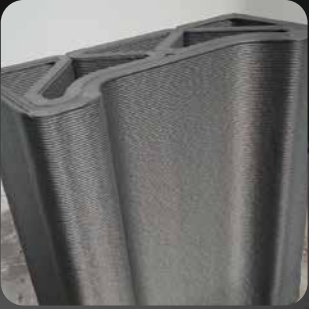
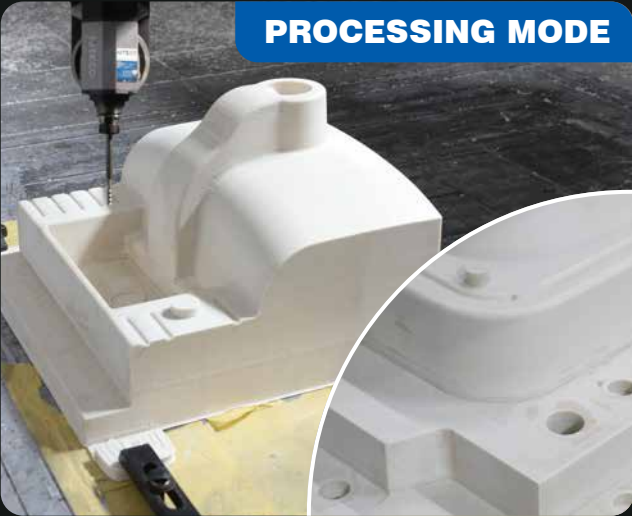
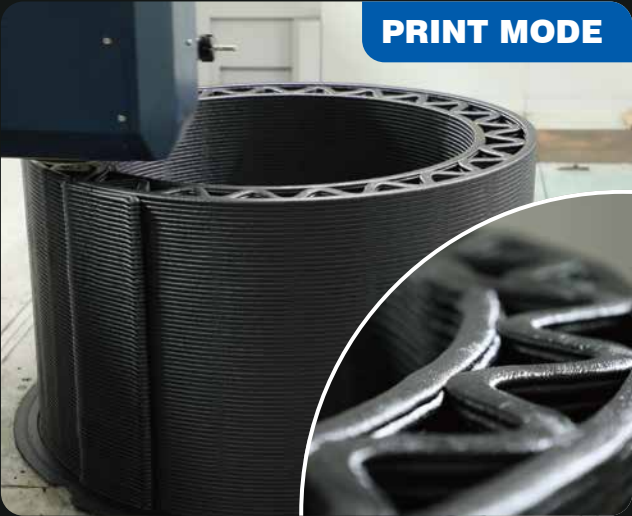
Six-zone independently controlled heating workbench
Select areas to control heating based on the printed model



SPECIFICATIONS		G40
Machine size: 5962×4220×4800mm		Slicer: Piocreat_Slicer
Three-axis positioning accuracy: ±0.1mm/m		Total Power: ≈65kW
Processing materials: Plastics and modified composite materials		N.W.: ≈15000kg
Printing materials: PLA/PETG/PVC/ABS/PC/PA/HDPE/TPU/EVA/PC+ABS/PETG+GF/PP+GF/PA+GF/ABS+GF/PC+CF		

Print Mode	Processing Mode
Print size: 3725×2500×1330mm	Processing size: 3400×2500×1330mm
Workbench load: 500kg/m²	Rotation angle: ±120° ASSE A ±320° ASSE C
Maximum heating: 120°C	Spindle power: 8.5kW
Extrusion volume: Max.25kg/h	Spindle speed: 24000r/min
Print speed: Max.10m/min	Processing speed: Max.10m/min
Feeder storage capacity: 75kg	Cooling machine power: 2.2kW

G40 Printing Model Case



The G40 is an integrated manufacturing center for additive and subtractive processes, combining FGF 3D printing and five-axis CNC machining. After 3D printing the model's dimensions and contours, it continues with milling to shape the final product, achieving faster speeds, lower costs, and higher material utilization. It's used to print large to ultra-large parts, molds, models, etc., from reinforced thermoplastic materials. It finds wide application in fields like aerospace, automotive manufacturing, wind power, yachting, home living, and urban landscapes for composite materials.

Pellets

A variety of pellet consumables



PET+CF
It has excellent mechanical properties and strong anti - deformation ability. It is suitable for industrial manufacturing, automotive parts, etc.
Printing temperature: 270 - 290°C



PA+CF
It can withstand a maximum high temperature of 150°C and is suitable for industrial jigs, fixtures, automotive parts, etc.
Printing temperature: 265 - 290°C



PC+CF
It can be used to manufacture molds and functional parts that are used at temperatures not higher than 110 °C.
Printing temperature: 270 - 280 °C



ABS+CF
It is easy to print, with excellent strength, remarkable dimensional stability, and amazing surface finish.
Printing temperature: 220 - 250°C



PETG+GF
It has enhanced strength but is more brittle compared to PETG. It can be used to manufacture furniture, decorations, and various prototypes.
Printing temperature: 210 - 240°C



PP
Glass fiber reinforced PP has excellent mechanical properties and is suitable for various industries.
Printing temperature: 250 - 290°C



rPETG
It is an environmentally friendly recycled material, which can be used to manufacture furniture, decorations, and various prototypes.
Printing temperature: 265 - 290°C



rPLA
It is an environmentally friendly recycled material with good biodegradability, suitable for indoor decoration, furniture and other scenarios.
Printing temperature: 190 - 210°C



ABS
It boasts excellent mechanical properties and dimensional stability. It is easy to process and form, and can be used for manufacturing molds.
Printing temperature: 190 - 220°C



PLA
It has good biodegradability and is suitable for indoor decoration, furniture and other scenarios.
Printing temperature: 190 - 210°C



PETG
It has high transparency, is easy to print, and is environmentally friendly. It can be used to manufacture furniture, decorations, and various prototypes.
Printing temperature: 210 - 240°C



TPU
It combines flexibility and elasticity, and is suitable for rehabilitation aids and rubber-like products.
Printing temperature: 180 - 195°C

For more material applications,
please consult...

Letter 3D Printing Solution

3D printer + Filament + Curing machine + Acrylic glue

Compared with the traditional production process of advertising characters, using 3D printing to make advertising characters is convenient, fast, low-cost, and rich in effects, which can maximize your creativity and ideas. We believe that 3D printing luminous characters will become a trend.



K6

Print size 600×600×85mm



3D Model-Free

Import professional software to generate 3D files



Double-in and Single-out

Non-manually filament switchin just 1 second



Resume Printing Function

No need to worry about power loss or filament running out



Double Gear Double Extrusion

Strong extrusion feeding performance with dual gears



SPECIFICATIONS	K6
Molding tech	FDM
Slicing software	Piocrete AD
Computer operating system	Win10/Win8/Win7
Applicable consumables	PMMA/PETG/PLAA(Blackout / Transmittance)
XY-axis positioning accuracy	≤0.05mm
Printing method	SD card
Nozzle diameter	0.6-1.2mm(standard 0.8mm)
Heating bed temperature	≤65°C
Nozzle temperature	≤260°C
Number of nozzles	1
Discharge structure	Double-in and single-out
Consumable diameter	1.75mm
Power requirements	AC 110V / 220V
Rated power	1160W
Operation speed	≤150mm/s
Machine size	862×1100×654mm
Package Size	1105×950×360mm
N.W.	44kg
G.W.	49kg

K8

Print size 800×800×85mm



3D Model-free

Import professional software to generate 3D files



Double-in and Single-out

Non-manually filament switchin just 1 second



Resume Printing Function

No need to worry about power loss or filament running out



One-key Quick Printing

One-key quick printing with easy operation of auto-leveling



SPECIFICATIONS	K8
Molding tech	FDM
Slicing software	Piocrete AD
Computer operating system	Win10/Win8/Win7
Applicable consumables	PMMA/PETG/PLA(Blackout / Transmittance)
XY-axis positioning accuracy	≤0.05mm
Printing method	SD card
Nozzle diameter	0.6-1.2mm (standard 0.8mm)
Heating bed temperature	≤65°C
Nozzle temperature	≤260°C
Number of nozzles	1
Discharge structure	Double-in and single-out
Consumable diameter	1.75mm
Power requirements	AC 110V / 220V
Rated power	1800W
Operation speed	≤150mm/s
Machine size	1222×1130×700mm
Package Size	1350×1350×720mm
N.W.	77kg
G.W.	138kg

KC-01

Large Industrial LED letter curing machine

UV Lamp Configuration

10 inserted 30W UV ultraviolet rays curing lamps to ensure good curing effect

Glass Translucent Board

High transmittance and uniform illumination, greatly reduces light decay rate

Timing Illumination

Automated scheduling with intelligent one-button control 30min/60min/90min

Cooling System

Built-in efficient fans to decrease lamp temperature



SPECIFICATIONS	KC01
Input voltage	AC 110V/220V
Rated power	300W
UV lamp power	30W*10=300W
Timing	30min/60min/90min
Machine size	L1000 x W950 x H390mm
Package Size	1020 x 1100 x 610mm
N.W.	54kg
G.W.	98kg

PETG

Special materials for channel letter 3D printer



opaque/
translucent white



opaque/
translucent silver



opaque/
translucent black



opaque/
translucent yellow



translucent green



translucent blue



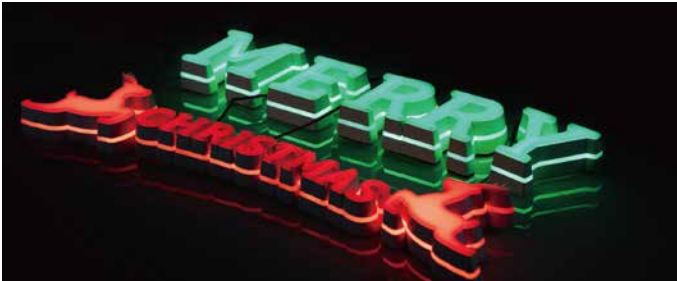
translucent light orange



translucent orange

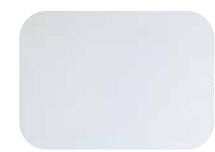


translucent red



Accessories

D series printer accessories



High speed release film
Less releasing resistance to speed up printing and improve printing success rate.



Resin vat
Built-in liquid level reminder to prevent waste caused by excessive dumping.




Print platform
High roughness oxidation sand-blasted platform surface increases the contact area to provide firmer adhesion for printed models during the printing process, and avoid models falling off.



LCD monochrome screen
Monochrome screen with high light transmittance and long service life.


G series printer accessories




Platform glue
Anti-warpage 3D Platform Glue
shake well before use!!!



PEI magnetic platform
Heating up quickly, reducing waiting time for printing. The platform is easy to put and take, can be bent, easy to take the mold.



Nozzles of various types
Various types of nozzles
0.4, 0.8, 1.0, 1.5, 2.0, 3.0, 4.0, etc.




Insulation cover
3D printer insulation cover, thermal insulation, constant temperature printing.



Suction and drying machine
It integrates material suction and drying in one unit, dries materials more efficiently and quickly, and improves printing quality.

Accessories

K series printer accessories




CR-Touch
Independent research and development, multi-point detection, intelligent compensation, easy installation, strong compatibility.




Heater rod
Rapid temperature rise, good temperature resistance.




Nozzle kit
Uniform filament output, temperature and abrasion resistance, easy replacement.




Fan
Strong wind, optimized filament molding.




Platform glue
Anti-warpage 3D Platform Glue
shake well before use!!!



Quick connector
Fast installation, accurate guidance of filament.



Heater block
High temperature resistant alloy to ensure constant temperature of the nozzle.



Extrusion handle kit
High-precision gear matching, smooth input of filament.



Nozzle sensor
Small footprint, high temperature measurement accuracy.



Acrylic glue
Self-developed acrylic glue, bright and light at night.